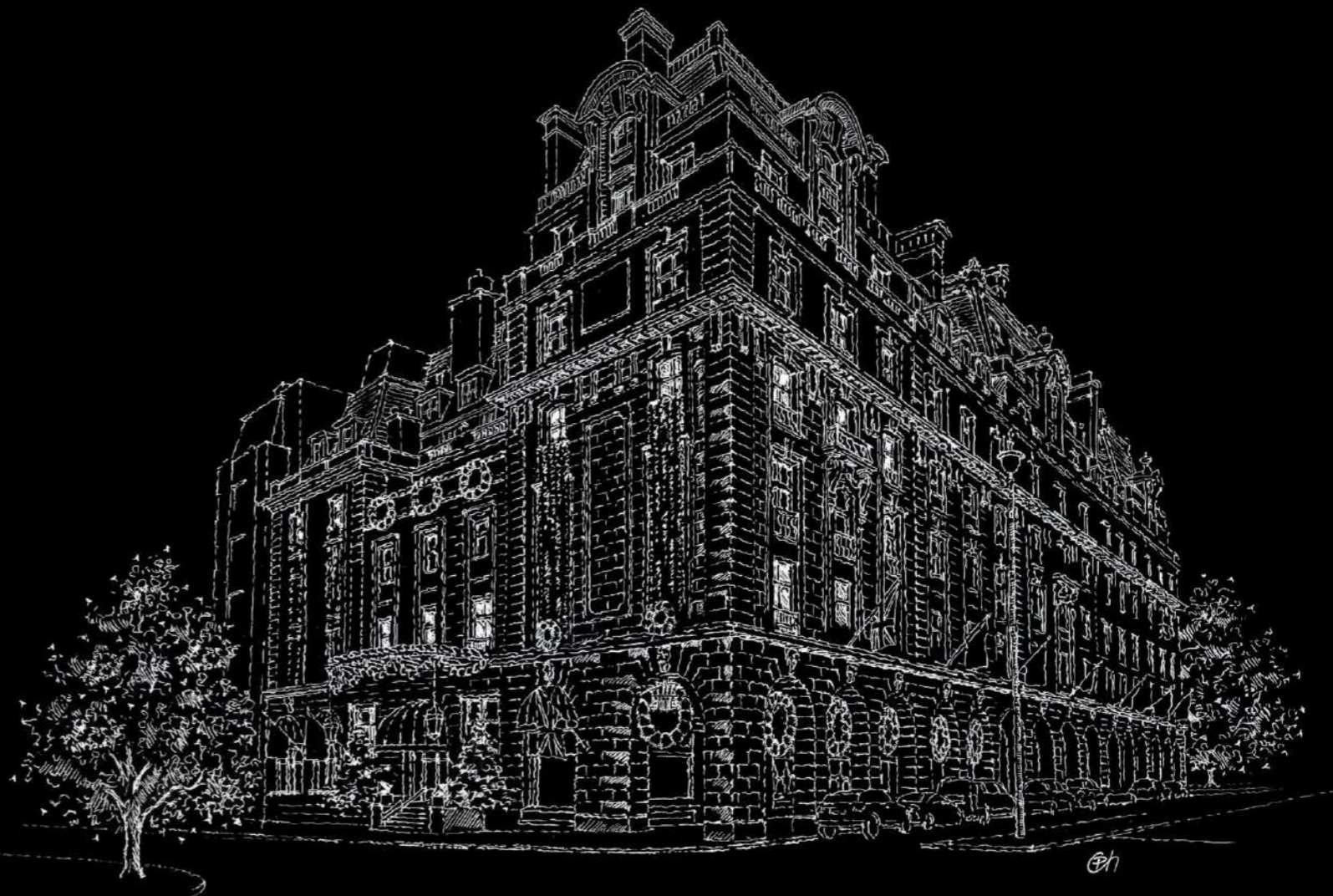


VISTA *Atelier*

A place where artistic vision meets **CAD** expertise



Portfolio - **Piotr Chilik**

Table of contents:

- Qualifications [Page 3]
- Hand sketches, lighting visuals & CGIs [Pages 4–22]
- Glow plans [Pages 23–26]
- Lighting plans [Pages 27-30]
- Lux level calculations [Pages 31-32]
- Architectural visualisations [Pages 33–46]
- Joinery technical drawings [Pages 47–50]

CRACOW UNIVERSITY OF TECHNOLOGY
Department of Architecture



DIPLOMA

Mr./Ms. **Piotr Chilik**
(name)

born on **March 3, 1976**

in **Rymanów**

completed the M. **Sc.** higher education studies
in the field of **Architecture and Urban Design**

specialization of **-**

with the overall grade: **very good** and on
Jan. 20, 2003 was granted the title of

Master of Sciences

 (an official seal) 
Dean Rector
prof. zw. dr hab. inż. arch. W. Seruga prof. zw. dr hab. inż. M. Chrzanowski

Cracow Date **April 11, 2003**
(name of the city)

TADEUSZ KOŚCIUSZKO CRACOW UNIVERSITY OF TECHNOLOGY
FACULTY OF ARCHITECTURE
MASTER OF SCIENCE DIPLOMA IN ARCHITECTURE

Mr/Mrs
Piotr Chilik




Born **March 3, 1976** in **Rymanów**

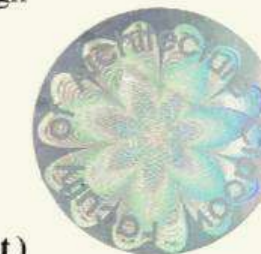
completed the five-year full time Master's Degree
Program in the field of Architecture and Urban Design

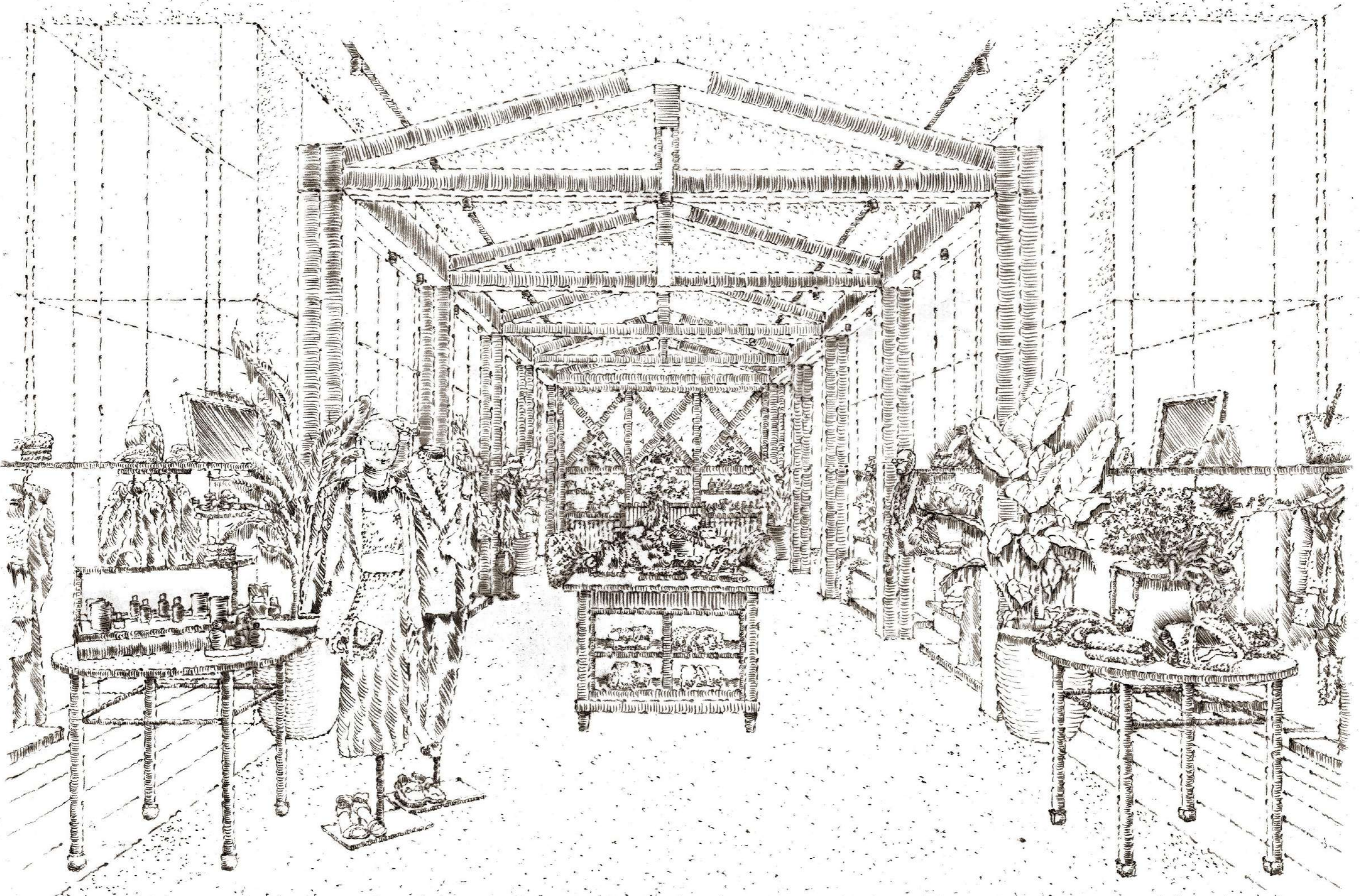
was granted on
January 20, 2003

the title of **Master of Science (Architect)**
no **4741/A/794** (diploma number)

The 5 year full time programme leading to the title Master of Science (Architect) with a specialisation in Architecture and Urban Design is recognised by the Royal Institute of British Architects as giving exemption from Parts 1 and 2 of the RIBA Examination in Architecture.
The above validation refers to all the students graduating from the Faculty of Architecture of the Cracow University of Technology in the period from November 1999 until May 2005.

  
DEAN RECTOR
Prof. zw. dr hab. inż. arch. W. Seruga Prof. zw. dr hab. inż. M. Chrzanowski





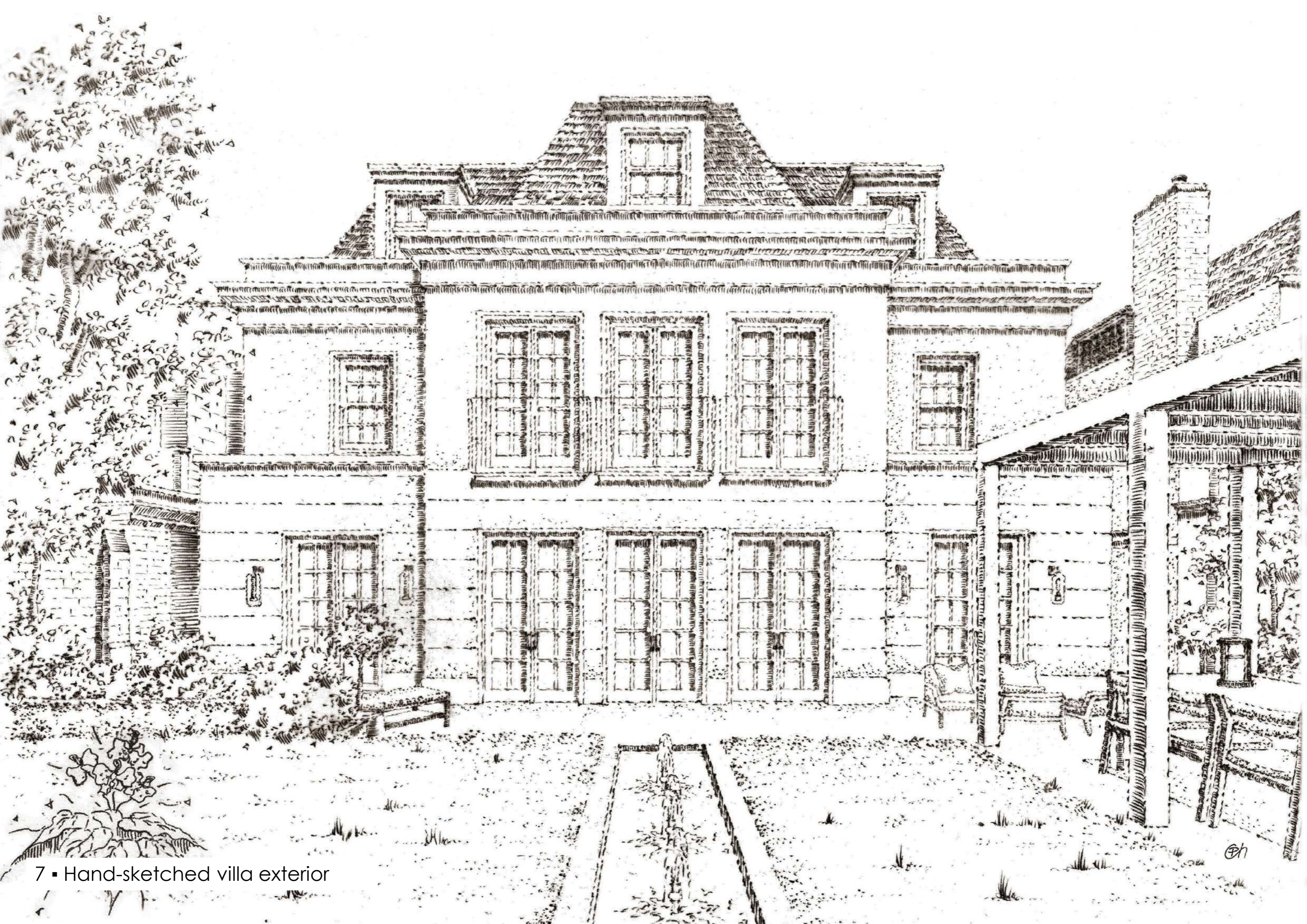
4 ■ Hand-sketched retail interior

PH

Luxury Fashion







7 • Hand-sketched villa exterior



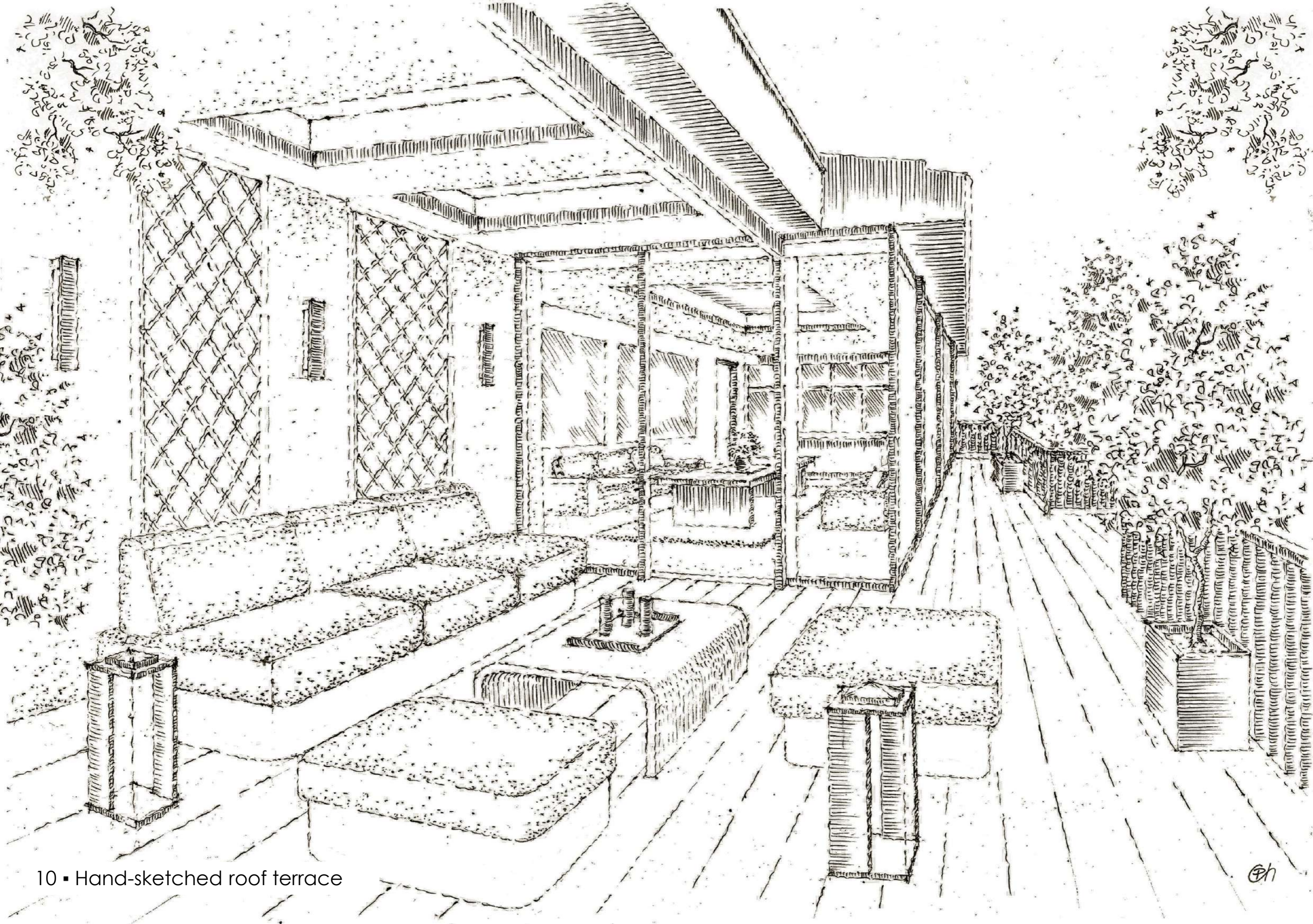
XAVIODESIGN

LONDON • PARIS • NEW YORK • SINGAPORE



8 • Photoshopped villa exterior lighting visual





10 ▪ Hand-sketched roof terrace

PH



XAVIODESIGN

LONDON • PARIS • NEW YORK • SINGAPORE

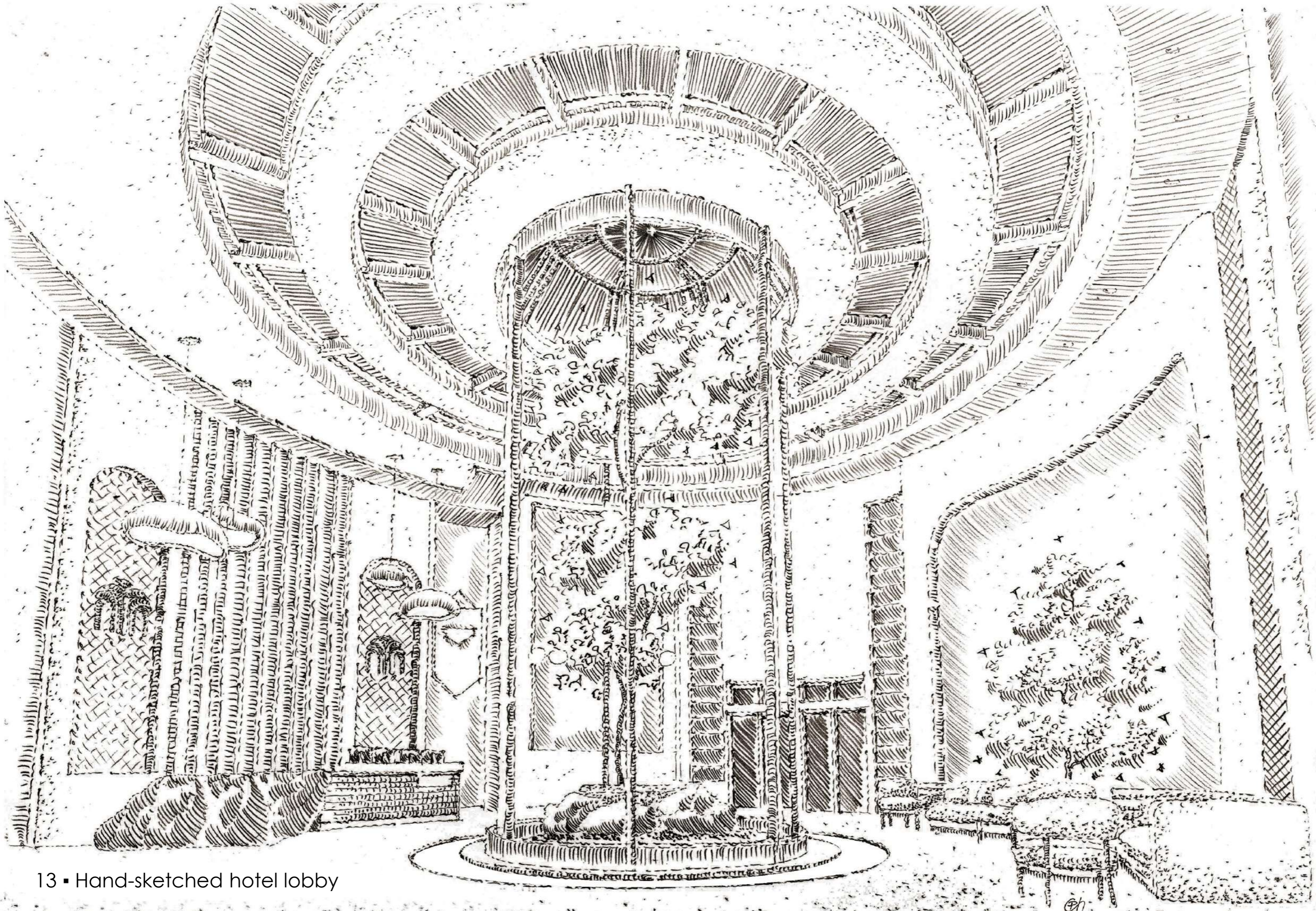


11 • Photoshopped roof terrace lighting visual

PH



12 • AI-generated roof terrace CGI



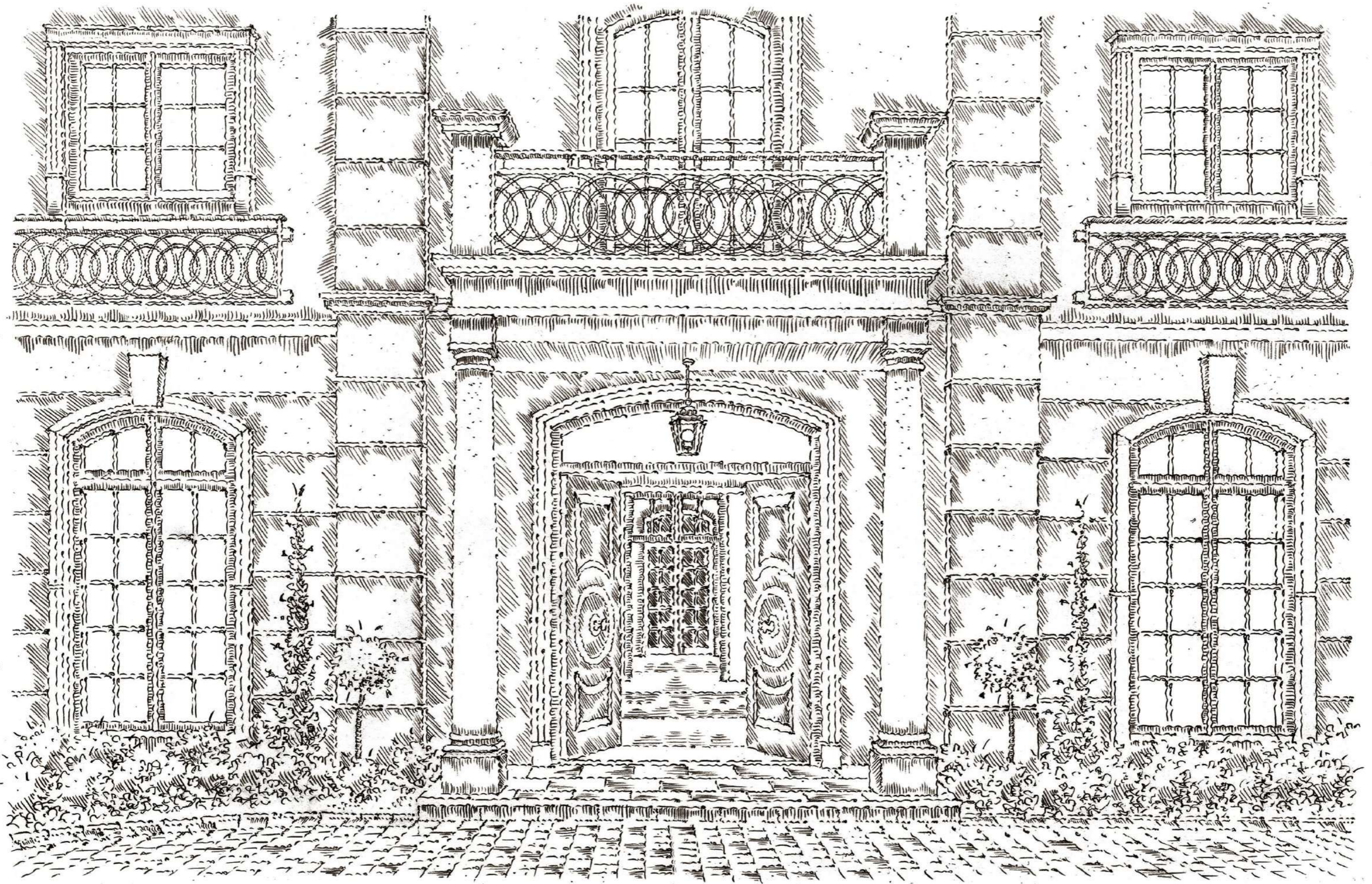
13 ■ Hand-sketches hotel lobby



14 • Photoshopped hotel lobby lighting visual

PH



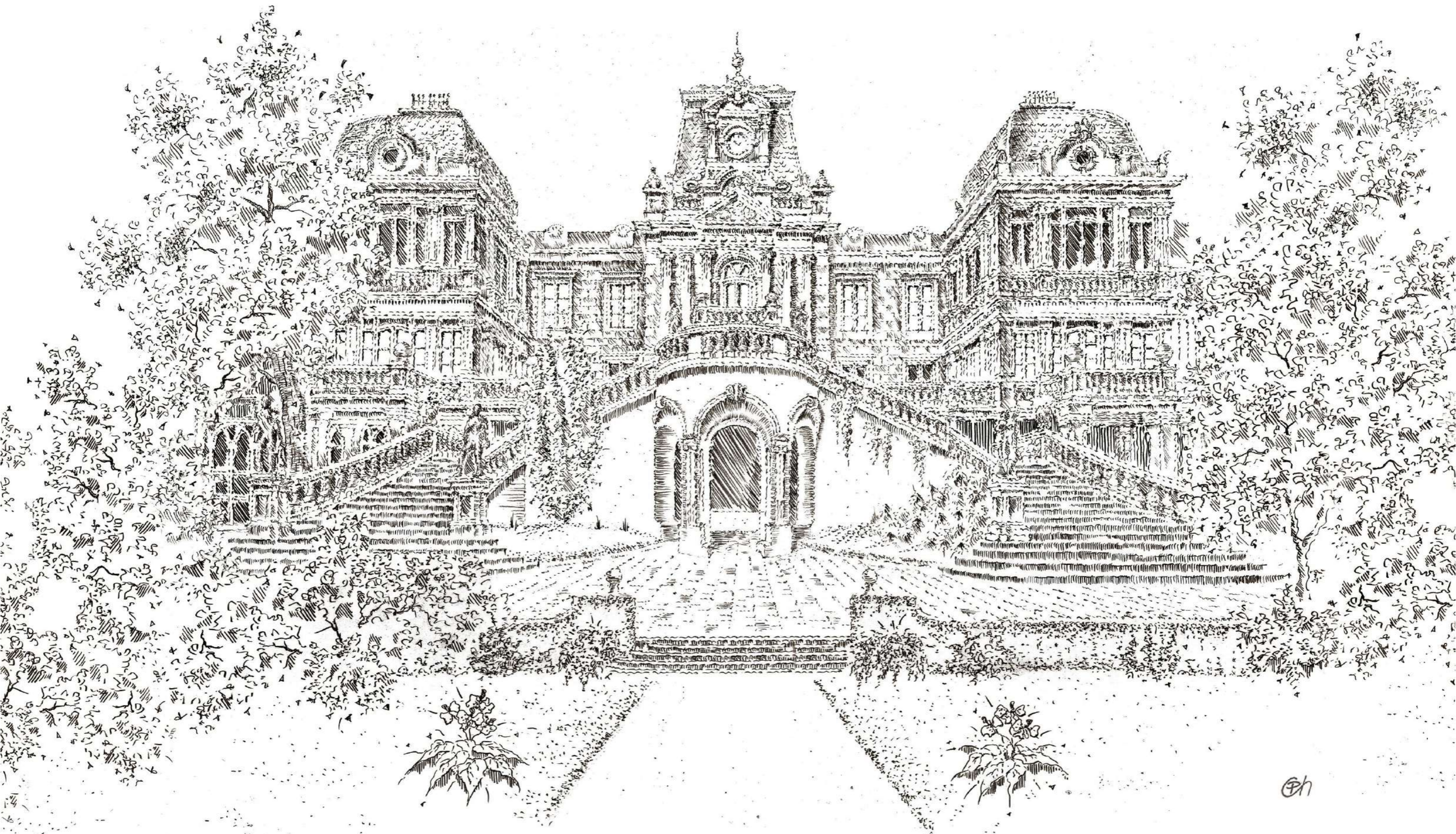


16 ■ Hand-sketches villa façade



17 • Photoshopped villa façade lighting visual





PH





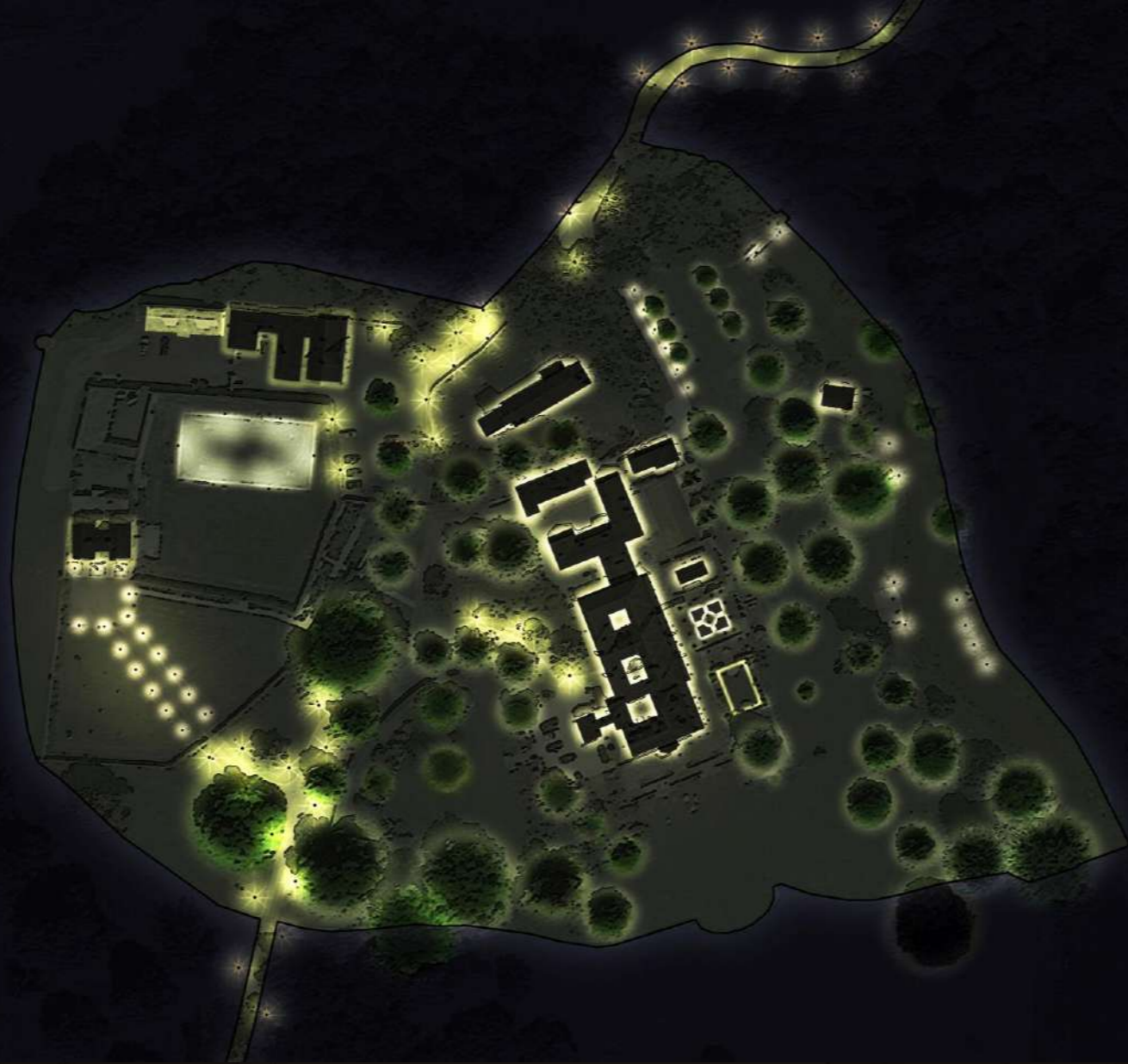


XAVIO DESIGN

Super Prime Lighting Consultancy

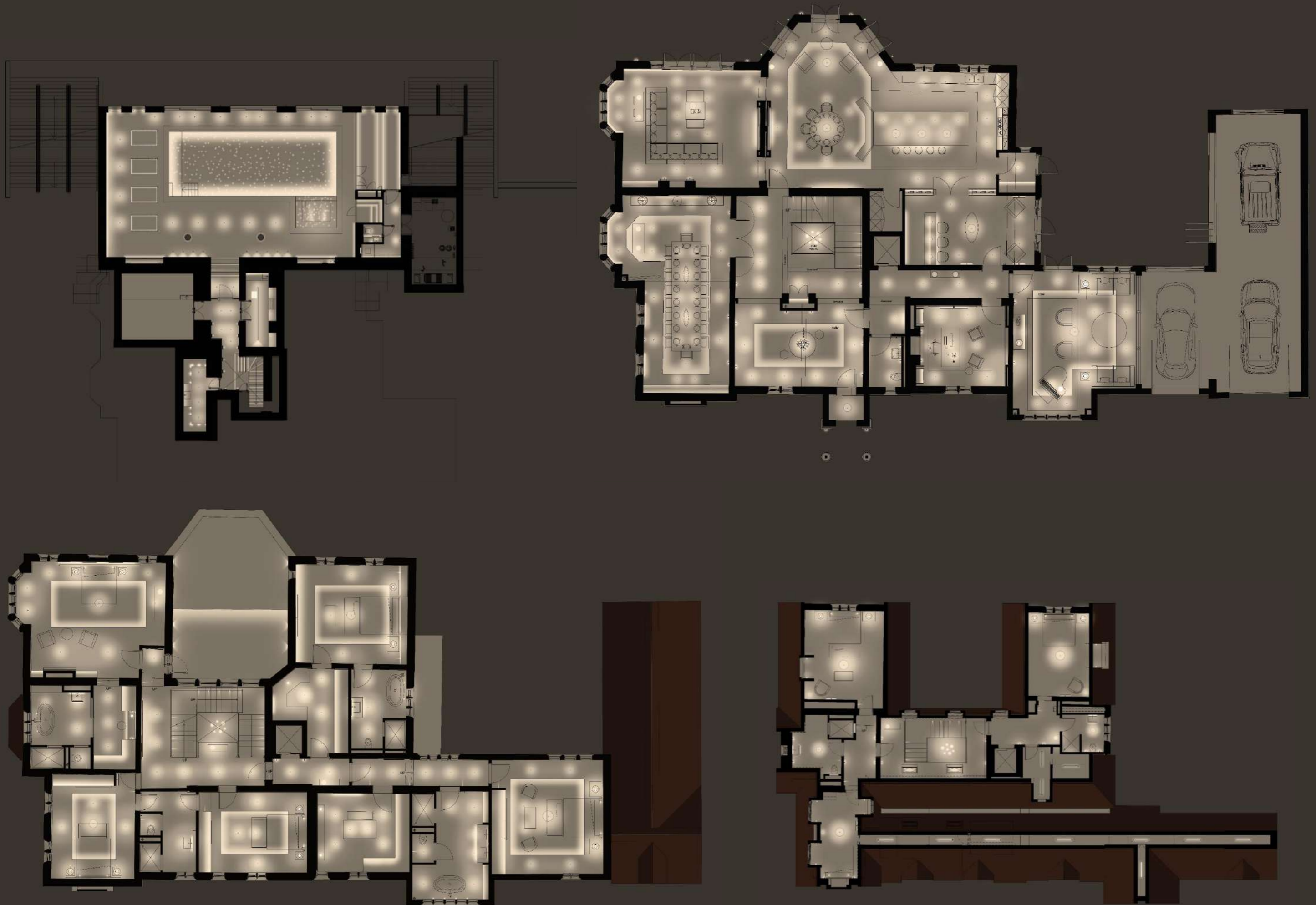
www.xavio-design.com







24 ▪ Photoshopped car showroom exterior glow plan



25 ▪ Photoshopped traditional villa internal glow plans



Ref.	Symbol	Description
C010	[Symbol]	Luna 550 Pendant
C011	[Symbol]	Flume 50 Pendant, Bespoke 24 drop
C012	[Symbol]	Strata 3200 Pendant
C013	[Symbol]	Strata Circular 1200 Pendant
C014	[Symbol]	Decorative Pendant, by ABI
C090	[Symbol]	Suspended Baton 4000K
C091	[Symbol]	Suspended Baton 4000K (EM)
C100	[Symbol]	Suspended 5500k Baton
C101	[Symbol]	Suspended 5500k Baton (EM)
C130	[Symbol]	Surface 4000k Baton
C131	[Symbol]	Surface 4000k Baton EM
C132	[Symbol]	Surface 6500k Baton
C135	[Symbol]	BOH Linear bulkhead
C136	[Symbol]	BOH Linear bulkhead EM
C142	[Symbol]	BOH Ceiling bulkhead (EM)
C150	[Symbol]	BOH Baton by D&T
C151	[Symbol]	BOH Baton EM by D&T
C167	[Symbol]	Ceiling Tile Non-Dim by D&T
C168	[Symbol]	Ceiling Tile Non-Dim EM by D&T
C170	[Symbol]	BOH Ceiling Tile, by D&T
C171	[Symbol]	BOH Ceiling Tile (EM), by D&T
D012	[Symbol]	Fixed Downlight Narrow Beam Black EM
D015	[Symbol]	Small Fixed Narrow Beam
D020	[Symbol]	IP Small Fixed Wide Beam
D030	[Symbol]	FOH Fixed Downlight Flood Beam White DALI
D031	[Symbol]	FOH Fixed Downlight Flood Beam White DALI EM
D032	[Symbol]	FOH Fixed Downlight Flood Beam Black DALI
D034	[Symbol]	FOH Fixed Downlight Flood Beam White 9010 DALI
D035	[Symbol]	BOH Fixed Downlight Flood Beam White Non-Dim
D036	[Symbol]	FOH Fixed Downlight Flood Beam White Non-Dim EM
D039	[Symbol]	FOH Fixed Downlight Flood Beam Black DALI EM
D040	[Symbol]	Adjustable Downlight Narrow Beam
D041	[Symbol]	Adjustable Downlight Narrow Beam Honeycomb
D042	[Symbol]	Adjustable Downlight Narrow Beam Honeycomb Black
D050	[Symbol]	Adjustable Downlight Medium Beam
D051	[Symbol]	Adjustable Downlight Medium Beam Honeycomb
D052	[Symbol]	Adjustable Downlight Medium Beam Frosted
D053	[Symbol]	Adjustable Downlight Medium Beam Honeycomb White 9010
D054	[Symbol]	Adjustable Downlight Medium Beam Frosted Black
D061	[Symbol]	Adjustable Downlight Wide Beam Honeycomb
D062	[Symbol]	Adjustable Downlight Wide Beam Frosted
D063	[Symbol]	Adjustable Downlight Wide Beam Honeycomb White 9010
D065	[Symbol]	Adjustable Downlight Wide Beam Honeycomb Black
D067	[Symbol]	Adjustable Downlight Wide Beam Frosted
D200	[Symbol]	BOH Downlight (EM) by D&T
D510	[Symbol]	Shell Fixed Medium Beam
E080	[Symbol]	Track Recessed Stand Alone Emergency Downlight
E090	[Symbol]	Wide Beam 500mA Emergency Downlight
G010	[Symbol]	IP Spike Light narrow beam high output
G020	[Symbol]	IP Spike Light wide beam high output
G025	[Symbol]	IP Spike Light wide beam high output
H010	[Symbol]	5W Low Output [No Profile]
H013	[Symbol]	10W Medium Output Slim Profile
H014	[Symbol]	5W Low Output Joinery Profile
H015	[Symbol]	5W Low Output Slim Profile Non-Dim
H018	[Symbol]	10W Medium Output Square Profile
H032	[Symbol]	15W High Output Quadrant Profile
H043	[Symbol]	IP 10W Medium Output Black Standard Profile
H089	[Symbol]	10W Medium Output Standard Profile Non-Dim
H090	[Symbol]	Dual Bend 1010 Neon LED
J020	[Symbol]	Talbot Bankers Light
K030	[Symbol]	Post Light 6m Pole Mount EM Asymmetric
K031	[Symbol]	Post Light 6m Pole Mount EM Road Optic
K032	[Symbol]	Post Light 6m Pole Mount EM Double Head
K040	[Symbol]	Bollard Floor Washer (EM)
P010	[Symbol]	DALI Provisional Circuit
P030	[Symbol]	Phase Provisional Circuit
P060	[Symbol]	[Symbol]
S010	[Symbol]	[Symbol]
S020	[Symbol]	[Symbol]
S021	[Symbol]	[Symbol]
S030	[Symbol]	IP Spotlight Wide Beam High Output (EM)
S059	[Symbol]	Track Mount Spotlight - Showroom
S069	[Symbol]	Track Mount Double Spotlight (55°)
S070	[Symbol]	Track Mount Fixed Downlight
S071	[Symbol]	Track Mount Double Spotlight (30°)
S086	[Symbol]	Track Mount Multi Lens (30°)
S087	[Symbol]	Track Mount Multi Lens (40°)
S088	[Symbol]	Track Mount Linear Wall Wash 600mm
S089	[Symbol]	Track Mount Linear Wall Wash 1200mm
T010	[Symbol]	Recessed Track
T040	[Symbol]	Suspended Track
U011	[Symbol]	Floor Recessed Uplight Narrow
U012	[Symbol]	Floor Recessed Uplight Wide
U020	[Symbol]	External Floor Recessed Adjustable Uplight Medium
U030	[Symbol]	External Floor Recessed Adjustable Uplight Wide
U040	[Symbol]	External Floor Recessed Uplight Wide
U050	[Symbol]	IP Floor Recessed Marker Light
U070	[Symbol]	IP Floor Recessed Linear Uplight
W010	[Symbol]	Internal Square Low Level Light
W011	[Symbol]	Internal Square Low Level Light EM
W020	[Symbol]	Internal Round Low Level Light
W031	[Symbol]	IP Square Low Level Recessed EM
W040	[Symbol]	IP Round Low Level Light EM
W060	[Symbol]	Flume 50 Wall Light, bronze
W060A	[Symbol]	Flume 50 Wall Light, antique brass
W060B	[Symbol]	Tor Mini Down Wall Light
W063	[Symbol]	Wall Mounted 5250k Baton
W064	[Symbol]	Wall Mounted 4000k Baton (1775mm)
W065	[Symbol]	Wall Mounted 6500k Baton (1775mm)
W066	[Symbol]	Wall Mounted 4000k Baton (1495mm)
W067	[Symbol]	Wall Mounted 6500k Baton (1495mm)
W068	[Symbol]	IP Wall Light BOH
W069	[Symbol]	IP Wall Light BOH EM
W070	[Symbol]	Dec Bathroom Wall Light, by others
W070A	[Symbol]	Strata Wall Light, bronze
W070B	[Symbol]	Strata Wall Light, antique brass
W070C	[Symbol]	Orbit Wall Light
W070D	[Symbol]	Talbot Wall Light
W071	[Symbol]	Up/Down Wall Light, Spot
W072	[Symbol]	IP Wall Down Light EM
W074	[Symbol]	IP Up/Down Wall Light, Asymmetric, EM
W075	[Symbol]	BOH wall bulkhead
W076	[Symbol]	BOH wall bulkhead EM
W077	[Symbol]	IP Up/Down Wall Light, Flood, EM
W100	[Symbol]	Spot Pro Wallwash, bronze
W100A	[Symbol]	Spot Pro Wallwash, antique brass
X010	[Symbol]	Recessed Door Switch, by others
X050	[Symbol]	5 Amp
X070	[Symbol]	Ceiling PIR BOH, by D&T
X075	[Symbol]	Ceiling PIR FOH, by Marquee
[Symbol]	[Symbol]	13 Amp
[Symbol]	[Symbol]	First Aid Point
[Symbol]	[Symbol]	Fire Alarm Break Glass
[Symbol]	[Symbol]	Driver Location



- Important Notes**
- Xavo plans show luminaire control groups NOT wiring topologies. Wiring topologies and cable routes/cable entry points remain the responsibility of the electrical contractor.
 - Refer to coordinated architect/interior designer plans and elevations for exact setting out of all lighting and contact Xavo for any discrepancies.
 - Please advise Xavo of any lighting clashes with joints/ceiling void/wall void/floor voids as soon as possible.
 - All control by Marquee AV.
 - All remote driver quantities and locations have been coordinated with D&T.
 - The joinery linear lighting shown is indicative only and should not be used to inform the detail of the joinery sections and elevations. See Vanhar Wrights drawings for more details.
 - See details for all joinery and architectural requirements to hide lighting from view.
 - All decorative luminaires by J Adams & Co to be specified and supplied by Alice Blue Interiors.
 - All directional downlights to be fitted towards close by vertical faces for reflected light.
 - W010 set 200mm from FFL.
 - W020 & W040 to be set at 80-100mm from FSL to centre of fitting.
 - For setting out of W030 and W031 see notes on plan.
 - See Alice Blue Interiors & Robotlums elevations for positioning of W060, W060A/B, W070, W070A/B/C, W100 and W100A.
 - In Detailing says and PFF says to be set as per Robotlums elevations. W071, W074 & W077 to set at 1800mm from FFL.
 - W072 to be set above doors as per elevations.
 - S020 & S021 to be set as per elevations.
 - S030 to be set 3500mm from FFL - to be coordinated with Robotlums.
 - U011 uplights to be set as close to vertical face as possible - no more than 80mm from vertical face to centre of fitting.
 - U020 uplights to be set 450mm from free trunks.
 - U050 path lights to be set as close to outer edge of ramps as possible.
 - U070 uplights to be set out on site by Junty.
 - All 13 amp sockets for lamps to be coordinated with small power layout. Small power layout by others.
 - All external lighting to be controlled by a time clock to prevent day time operation.
 - Luminaires linked by blue spline lines indicate DALI dimming on main control system. Luminaires linked by green spline lines indicate non-dim on local manual control.

STAGE 5
Printed
18.11.2025

Rev.	Date	Notes
11	18/11/2025	Stage 5
10	23/10/2024	Stage 5
9	20/09/2024	Stage 5
8	31/07/2024	Stage 5
7	02/07/2024	Stage 5
6	01/05/2024	Stage 5
5	24/04/2024	Stage 5a WIP
4	17/04/2024	Stage 5a WIP
3	09/04/2024	Stage 5a WIP
2	13/12/2023	Stage 4 Issue
A	28/05/2023	Stage 4 Issue
1st Issue	14/02/2023	Stage 3 Issue

XAVO DESIGN OF MAYFAIR
1st Floor | Bankers (see notes) | Bankers (see notes)
London | W1 | +44 20 7463 5000
© XVO 2017 | 1 design@xavo.co.uk | www.xavo.co.uk

Project: Private Client

Project Ref: [Blank]

Drawing Ref: [Blank]

Hour level: Lighting Layout - Exterior Part 1

Project Stage	Revision	NBA Scope
For Construction	11	S

Drawn by: SP | Approved by: SP | Date: 18.11.2025

Scale: 1:200 @ A1 | MM

28 ■ CAD car showroom exterior lighting plan – Part 1

Ref.	Symbol	Description
C010	[Symbol]	Luna 550 Pendant
C011	[Symbol]	Flume 50 Pendant, Bespoke 24 drop
C012	[Symbol]	Strata 3200 Pendant
C013	[Symbol]	Strata Circular 1200 Pendant
C014	[Symbol]	Decorative Pendant, by ABI
C090	[Symbol]	Suspended Baton 4000k
C091	[Symbol]	Suspended Baton 4000k (EM)
C100	[Symbol]	Suspended 5500k Baton
C101	[Symbol]	Suspended 5500k Baton (EM)
C130	[Symbol]	Surface 4000k Baton
C131	[Symbol]	Surface 4000k Baton EM
C132	[Symbol]	Surface 6500k Baton
C135	[Symbol]	BOH Linear bulkhead
C136	[Symbol]	BOH Linear bulkhead EM
C142	[Symbol]	BOH Ceiling bulkhead (EM)
C150	[Symbol]	BOH Baton by D&T
C151	[Symbol]	BOH Baton EM by D&T
C167	[Symbol]	Ceiling Tile Non-Dim by D&T
C168	[Symbol]	Ceiling Tile Non-Dim EM by D&T
C170	[Symbol]	BOH Ceiling Tile, by D&T
C171	[Symbol]	BOH Ceiling Tile (EM), by D&T
D012	[Symbol]	Fixed Downlight Narrow Beam Black EM
D015	[Symbol]	Small Fixed Narrow Beam
D020	[Symbol]	IP Small Fixed Wide Beam
D030	[Symbol]	FOH Fixed Downlight Flood Beam White DALI
D031	[Symbol]	FOH Fixed Downlight Flood Beam White DALI EM
D032	[Symbol]	FOH Fixed Downlight Flood Beam Black DALI
D034	[Symbol]	FOH Fixed Downlight Flood Beam White 9010 DALI
D035	[Symbol]	BOH Fixed Downlight Flood Beam White Non-Dim
D036	[Symbol]	FOH Fixed Downlight Flood Beam White Non-Dim EM
D039	[Symbol]	FOH Fixed Downlight Flood Beam Black DALI EM
D040	[Symbol]	Adjustable Downlight Narrow Beam
D041	[Symbol]	Adjustable Downlight Narrow Beam Honeycomb
D042	[Symbol]	Adjustable Downlight Narrow Beam Honeycomb Black
D050	[Symbol]	Adjustable Downlight Medium Beam
D051	[Symbol]	Adjustable Downlight Medium Beam Honeycomb
D052	[Symbol]	Adjustable Downlight Medium Beam Frosted
D053	[Symbol]	Adjustable Downlight Medium Beam Honeycomb White 9010
D054	[Symbol]	Adjustable Downlight Medium Beam Frosted Black
D061	[Symbol]	Adjustable Downlight Wide Beam Honeycomb
D062	[Symbol]	Adjustable Downlight Wide Beam Frosted
D063	[Symbol]	Adjustable Downlight Wide Beam Honeycomb White 9010
D065	[Symbol]	Adjustable Downlight Wide Beam Honeycomb Black
D067	[Symbol]	Adjustable Downlight Wide Beam Frosted
D200	[Symbol]	BOH Downlight (EM) by D&T
D510	[Symbol]	Shelf Fixed Medium Beam
E080	[Symbol]	Track Recessed Stand Alone Emergency Downlight
E090	[Symbol]	Wide Beam 500mA Emergency Downlight
G010	[Symbol]	IP Spike Light narrow beam high output
G020	[Symbol]	IP Spike Light wide beam high output
G025	[Symbol]	IP Spike Light wide beam high output
H010	[Symbol]	5W Low Output (No Profile)
H013	[Symbol]	10W Medium Output Slim Profile
H014	[Symbol]	5W Low Output Joinery Profile
H015	[Symbol]	5W Low Output Slim Profile Non-Dim
H018	[Symbol]	10W Medium Output Square Profile
H032	[Symbol]	15W High Output Quadrant Profile
H043	[Symbol]	IP 10W Medium Output Black Standard Profile
H089	[Symbol]	10W Medium Output Standard Profile Non-Dim
H090	[Symbol]	Dual Bend 1010 Neon LED
J020	[Symbol]	Talbot Bankers Light
K030	[Symbol]	Post Light 6m Pole Mount EM Asymmetric
K031	[Symbol]	Post Light 6m Pole Mount EM Road Optic
K032	[Symbol]	Post Light 6m Pole Mount EM Double Head
K040	[Symbol]	Bollard Floor Washer (EM)
P010	[Symbol]	DALI Provisional Circuit
P030	[Symbol]	Phase Provisional Circuit
PC61	[Symbol]	[Symbol]
S011	[Symbol]	[Symbol]
S02L	[Symbol]	[Symbol]
S021	[Symbol]	[Symbol]

S030	[Symbol]	IP Spotlight Wide Beam High Output (EM)
S059	[Symbol]	Track Mount Spotlight - Showroom
S069	[Symbol]	Track Mount Double Spotlight (55°)
S070	[Symbol]	Track Mount Fixed Downlight
S071	[Symbol]	Track Mount Double Spotlight (30°)
S086	[Symbol]	Track Mount Multi Lens (30°)
S087	[Symbol]	Track Mount Multi Lens (40°)
S088	[Symbol]	Track Mount Linear Wall Wash 600mm
S089	[Symbol]	Track Mount Linear Wall Wash 1200mm
T010	[Symbol]	Recessed Track
T040	[Symbol]	Suspended Track
U011	[Symbol]	Floor Recessed Uplight Narrow
U012	[Symbol]	Floor Recessed Uplight Wide
U020	[Symbol]	External Floor Recessed Adjustable Uplight Medium
U030	[Symbol]	External Floor Recessed Adjustable Uplight Wide
U040	[Symbol]	External Floor Recessed Uplight Wide
U050	[Symbol]	IP Floor Recessed Marker Light
U070	[Symbol]	IP Floor Recessed Linear Uplight
W010	[Symbol]	Internal Square Low Level Light
W011	[Symbol]	Internal Square Low Level Light EM
W020	[Symbol]	Internal Round Low Level Light
W031	[Symbol]	IP Square Low Level Recessed EM
W040	[Symbol]	IP Round Low Level Light EM
W060	[Symbol]	Flume 50 Wall Light, bronze
W060A	[Symbol]	Flume 50 Wall Light, antique brass
W060B	[Symbol]	Tor Mini Down Wall Light
W063	[Symbol]	Wall Mounted 5250k Baton
W064	[Symbol]	Wall Mounted 4000k Baton [1775mm]
W065	[Symbol]	Wall Mounted 6500k Baton [1775mm]
W066	[Symbol]	Wall Mounted 4000k Baton [1495mm]
W067	[Symbol]	Wall Mounted 6500k Baton [1495mm]
W068	[Symbol]	IP Wall Light BOH
W069	[Symbol]	IP Wall Light BOH EM
W070	[Symbol]	Dec Bathroom Wall Light, by others
W070A	[Symbol]	Strata Wall Light, bronze
W070B	[Symbol]	Strata Wall Light, antique brass
W070C	[Symbol]	Orbit Wall Light
W070D	[Symbol]	Talbot Wall Light
W076	[Symbol]	BOH wall bulkhead EM
W077	[Symbol]	IP Up/Down Wall Light, Flood, EM
W100	[Symbol]	Spot Pro Wallwash, bronze
W100A	[Symbol]	Spot Pro Wallwash, antique brass
X010	[Symbol]	Recessed Door Switch, by others
X050	[Symbol]	5 Amp
X070	[Symbol]	Ceiling PIR BOH, by D&T
X075	[Symbol]	Ceiling PIR FOH, by Marquee
[Symbol]	[Symbol]	13 Amp
[Symbol]	[Symbol]	First Aid Point
[Symbol]	[Symbol]	Fire Alarm Break Glass
[Symbol]	[Symbol]	Arm Panel/Repeater
[Symbol]	[Symbol]	13 switch, by D&T
[Symbol]	[Symbol]	Control Panel
[Symbol]	[Symbol]	Driver Location



- Important Notes**
- Xavio plans show luminaire control groups NOT wiring topologies. Wiring topologies and cable routes/locations entry points remain the responsibility of the electrical contractor.
 - Refer to coordinated architect/interior designer plans and elevations for exact settings out of all lighting and contact Xavio for any discrepancies.
 - Please advise Xavio of any lighting clashes with joists/ceiling void/wall void/floor voids as soon as possible.
 - All control by Marquee AV.
 - All remote driver quantities and locations have been coordinated with D&T.
 - The joinery linear lighting shown is indicative only and should not be used to inform the detail of the joinery sections and elevations. See Venhar Wrights drawings for more details.
 - See details for all joinery and architectural requirements to hide lighting from view.
 - All decorative luminaires by J Adams & Co to be specified and supplied by Alice Blue Interiors.
 - All directional downlights to be fitted towards close by vertical faces for reflected light.
 - W010 set 200mm from FFL.
 - W020 & W040 to be set of 90-100mm from FFL to centre of fitting.
 - For setting out of W030 and W031, see notes on plan.
 - See Alice Blue Interiors & Robothams elevations for positioning of W060, W060A/B, W070, W070A/B/C, W100 and W100A.
 - In Detailing Boys and PFF Boys to be set as per Robothams's elevations. W071, W074 & W077 to set of 1800mm from FFL.
 - W072 to be set above doors as per elevations.
 - S020 & S021 to be set as per elevations.
 - S030 to be set 3500mm from FFL - to be coordinated with Robothams.
 - U011 uplights to be set as close to vertical face as possible - no more than 50mm from vertical face to centre of fitting.
 - U020 uplights to be set 450mm from tree trunks.
 - U050 uplights to be as close to outer edge of ramps as possible.
 - U070 uplights to be set out on site by Junly.
 - All 13 amp sockets for lamps to be coordinated with small power layout. Small power layout by others.
 - All external lighting to be controlled by a time clock to prevent day time operation.
 - Luminaires linked by blue spine lines indicate DALI dimming on main control system. Luminaires linked by green spine lines indicate non-dim on local manual controls.

**STAGE 5
Printed
18.11.2025**

Rev.	Date	Notes
11	18/11/2025	Stage 5
10	23/10/2025	Stage 5
9	30/09/2025	Stage 5
8	31/07/2025	Stage 5
7	02/07/2025	Stage 5
6	01/05/2025	Stage 5a
5	24/04/2025	Stage 5a WIP
4	17/04/2025	Stage 5a WIP
3	08/04/2025	Stage 5a WIP
2	13/12/2023	Stage 4 Issue
A	28/05/2023	Stage 4 Issue
1st Issue	14/02/2023	Stage 3 Issue

KAVIO DESIGN OF MAYTECH
 London | Paris | Madrid
 020 3304 0077 | design@kavio.com | www.kavio.com

Client: Private Client

Project Out: 11

Project Stage: For Construction

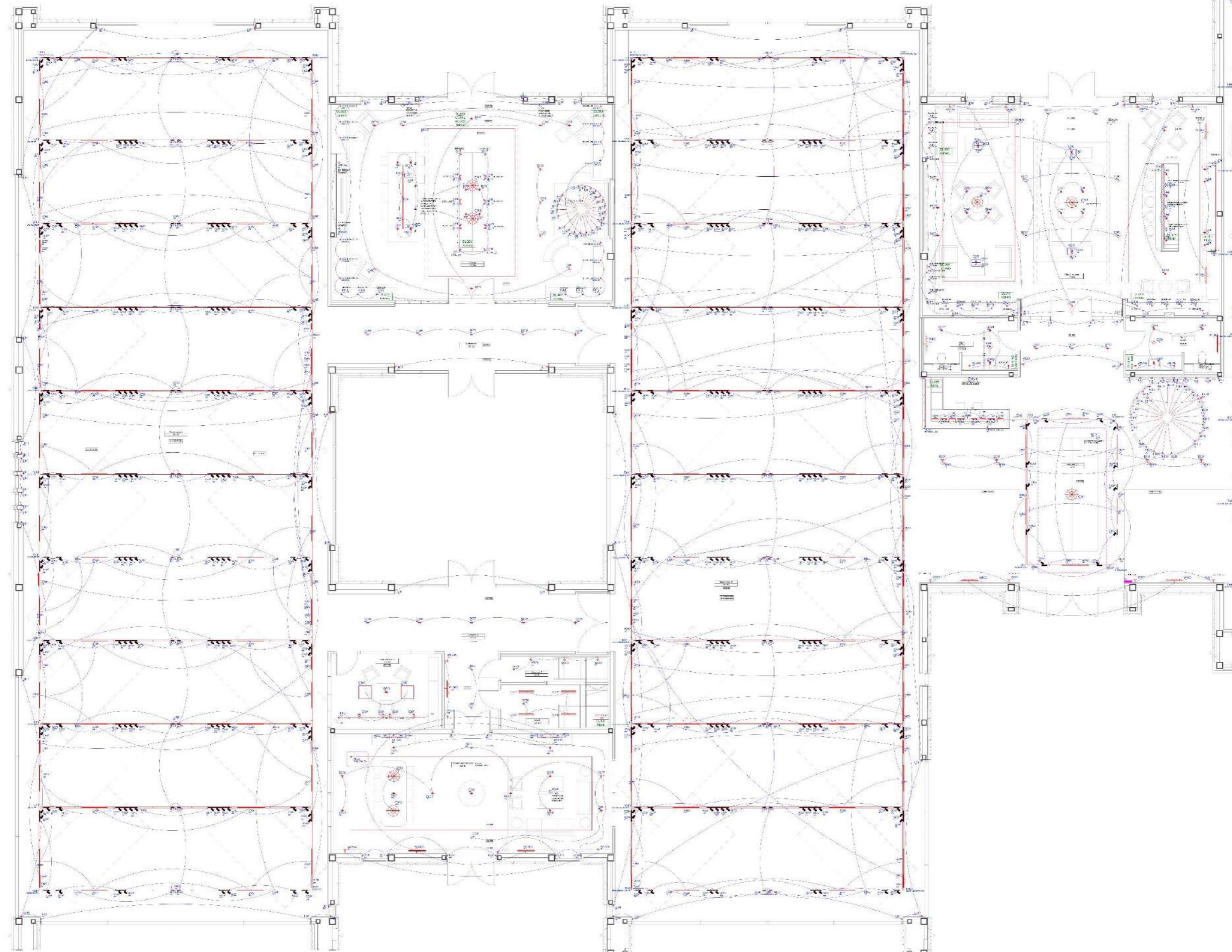
Project Date: 18.11.2025

Scale: 1:200 @ A1

Unit: MM

29 ■ CAD car showroom exterior lighting plan – Part 2

- C1011 1x1x50 Pendant
- C1012 1x1x50 Pendant
- C1013 1x1x50 Pendant
- C1014 1x1x50 Pendant
- C1015 1x1x50 Pendant
- C1016 1x1x50 Pendant
- C1017 1x1x50 Pendant
- C1018 1x1x50 Pendant
- C1019 1x1x50 Pendant
- C1020 1x1x50 Pendant
- C1021 1x1x50 Pendant
- C1022 1x1x50 Pendant
- C1023 1x1x50 Pendant
- C1024 1x1x50 Pendant
- C1025 1x1x50 Pendant
- C1026 1x1x50 Pendant
- C1027 1x1x50 Pendant
- C1028 1x1x50 Pendant
- C1029 1x1x50 Pendant
- C1030 1x1x50 Pendant
- C1031 1x1x50 Pendant
- C1032 1x1x50 Pendant
- C1033 1x1x50 Pendant
- C1034 1x1x50 Pendant
- C1035 1x1x50 Pendant
- C1036 1x1x50 Pendant
- C1037 1x1x50 Pendant
- C1038 1x1x50 Pendant
- C1039 1x1x50 Pendant
- C1040 1x1x50 Pendant
- C1041 1x1x50 Pendant
- C1042 1x1x50 Pendant
- C1043 1x1x50 Pendant
- C1044 1x1x50 Pendant
- C1045 1x1x50 Pendant
- C1046 1x1x50 Pendant
- C1047 1x1x50 Pendant
- C1048 1x1x50 Pendant
- C1049 1x1x50 Pendant
- C1050 1x1x50 Pendant
- C1051 1x1x50 Pendant
- C1052 1x1x50 Pendant
- C1053 1x1x50 Pendant
- C1054 1x1x50 Pendant
- C1055 1x1x50 Pendant
- C1056 1x1x50 Pendant
- C1057 1x1x50 Pendant
- C1058 1x1x50 Pendant
- C1059 1x1x50 Pendant
- C1060 1x1x50 Pendant
- C1061 1x1x50 Pendant
- C1062 1x1x50 Pendant
- C1063 1x1x50 Pendant
- C1064 1x1x50 Pendant
- C1065 1x1x50 Pendant
- C1066 1x1x50 Pendant
- C1067 1x1x50 Pendant
- C1068 1x1x50 Pendant
- C1069 1x1x50 Pendant
- C1070 1x1x50 Pendant
- C1071 1x1x50 Pendant
- C1072 1x1x50 Pendant
- C1073 1x1x50 Pendant
- C1074 1x1x50 Pendant
- C1075 1x1x50 Pendant
- C1076 1x1x50 Pendant
- C1077 1x1x50 Pendant
- C1078 1x1x50 Pendant
- C1079 1x1x50 Pendant
- C1080 1x1x50 Pendant
- C1081 1x1x50 Pendant
- C1082 1x1x50 Pendant
- C1083 1x1x50 Pendant
- C1084 1x1x50 Pendant
- C1085 1x1x50 Pendant
- C1086 1x1x50 Pendant
- C1087 1x1x50 Pendant
- C1088 1x1x50 Pendant
- C1089 1x1x50 Pendant
- C1090 1x1x50 Pendant
- C1091 1x1x50 Pendant
- C1092 1x1x50 Pendant
- C1093 1x1x50 Pendant
- C1094 1x1x50 Pendant
- C1095 1x1x50 Pendant
- C1096 1x1x50 Pendant
- C1097 1x1x50 Pendant
- C1098 1x1x50 Pendant
- C1099 1x1x50 Pendant
- C1100 1x1x50 Pendant
- C1101 1x1x50 Pendant
- C1102 1x1x50 Pendant
- C1103 1x1x50 Pendant
- C1104 1x1x50 Pendant
- C1105 1x1x50 Pendant
- C1106 1x1x50 Pendant
- C1107 1x1x50 Pendant
- C1108 1x1x50 Pendant
- C1109 1x1x50 Pendant
- C1110 1x1x50 Pendant
- C1111 1x1x50 Pendant
- C1112 1x1x50 Pendant
- C1113 1x1x50 Pendant
- C1114 1x1x50 Pendant
- C1115 1x1x50 Pendant
- C1116 1x1x50 Pendant
- C1117 1x1x50 Pendant
- C1118 1x1x50 Pendant
- C1119 1x1x50 Pendant
- C1120 1x1x50 Pendant
- C1121 1x1x50 Pendant
- C1122 1x1x50 Pendant
- C1123 1x1x50 Pendant
- C1124 1x1x50 Pendant
- C1125 1x1x50 Pendant
- C1126 1x1x50 Pendant
- C1127 1x1x50 Pendant
- C1128 1x1x50 Pendant
- C1129 1x1x50 Pendant
- C1130 1x1x50 Pendant
- C1131 1x1x50 Pendant
- C1132 1x1x50 Pendant
- C1133 1x1x50 Pendant
- C1134 1x1x50 Pendant
- C1135 1x1x50 Pendant
- C1136 1x1x50 Pendant
- C1137 1x1x50 Pendant
- C1138 1x1x50 Pendant
- C1139 1x1x50 Pendant
- C1140 1x1x50 Pendant
- C1141 1x1x50 Pendant
- C1142 1x1x50 Pendant
- C1143 1x1x50 Pendant
- C1144 1x1x50 Pendant
- C1145 1x1x50 Pendant
- C1146 1x1x50 Pendant
- C1147 1x1x50 Pendant
- C1148 1x1x50 Pendant
- C1149 1x1x50 Pendant
- C1150 1x1x50 Pendant
- C1151 1x1x50 Pendant
- C1152 1x1x50 Pendant
- C1153 1x1x50 Pendant
- C1154 1x1x50 Pendant
- C1155 1x1x50 Pendant
- C1156 1x1x50 Pendant
- C1157 1x1x50 Pendant
- C1158 1x1x50 Pendant
- C1159 1x1x50 Pendant
- C1160 1x1x50 Pendant
- C1161 1x1x50 Pendant
- C1162 1x1x50 Pendant
- C1163 1x1x50 Pendant
- C1164 1x1x50 Pendant
- C1165 1x1x50 Pendant
- C1166 1x1x50 Pendant
- C1167 1x1x50 Pendant
- C1168 1x1x50 Pendant
- C1169 1x1x50 Pendant
- C1170 1x1x50 Pendant
- C1171 1x1x50 Pendant
- C1172 1x1x50 Pendant
- C1173 1x1x50 Pendant
- C1174 1x1x50 Pendant
- C1175 1x1x50 Pendant
- C1176 1x1x50 Pendant
- C1177 1x1x50 Pendant
- C1178 1x1x50 Pendant
- C1179 1x1x50 Pendant
- C1180 1x1x50 Pendant
- C1181 1x1x50 Pendant
- C1182 1x1x50 Pendant
- C1183 1x1x50 Pendant
- C1184 1x1x50 Pendant
- C1185 1x1x50 Pendant
- C1186 1x1x50 Pendant
- C1187 1x1x50 Pendant
- C1188 1x1x50 Pendant
- C1189 1x1x50 Pendant
- C1190 1x1x50 Pendant
- C1191 1x1x50 Pendant
- C1192 1x1x50 Pendant
- C1193 1x1x50 Pendant
- C1194 1x1x50 Pendant
- C1195 1x1x50 Pendant
- C1196 1x1x50 Pendant
- C1197 1x1x50 Pendant
- C1198 1x1x50 Pendant
- C1199 1x1x50 Pendant
- C1200 1x1x50 Pendant



- Important Notes**
1. Xavo plans show luminaires control groups (CCT) wiring topologies, wiring topologies and cable routes/cable entry points remain the responsibility of the electrical contractor.
 2. Refer to coordinated architect/interior designer plans and elevations for exact setting out of all lighting and contact Xavo for any discrepancies.
 3. Please advise Xavo of any lighting clashes with joints/celling void/wall void/floor voids as soon as possible.
 4. All control by Marquee AV.
 5. All remote driver quantities and locations have been coordinated with D&I.
 6. The joinery linear lighting shown is indicative only and should not be used to inform the detail of the joinery sections and elevations. See Venhar Wright drawings for more details.
 7. See details for all joinery and architectural requirements to hide lighting from view.
 8. All decorative luminaires by J Adams & Co to be specified and supplied by Alice Blue Interiors.
 9. All directional downlights to be fitted towards close by vertical faces for reflected light.
 10. W010 set 200mm from FFL.
 11. W020 & W040 to be set at 80-100mm from FFL to centre of fitting.
 12. For setting out of W030 and W031, see notes on plan.
 13. See Alice Blue Interiors & Robothams elevations for positioning of W060, W060A/B, W070, W070A/B/C, W100 and W100A.
 14. In Defining Bays and PFF Bays to be set as per Robothams's elevations. W071, W074 & W077 to set at 1800mm from FFL.
 15. W072 to be set above doors as per elevations.
 16. S020 & S021 to be set as per elevations.
 17. S030 to be set 3500mm from FFL - to be coordinated with Robothams.
 18. U011 uplights to be set as close to vertical face as possible - no more than 80mm to m vertical face to centre of fitting.
 19. U020 uplights to be set 450mm from face trunks.
 20. U050 path lights to be as close to outer edge of ramps as possible.
 21. U070 uplights to be set out on site by Juny.
 22. All 13 amp sockets for lamps to be coordinated with small power layout. Small power layout by others.
 23. All external lighting to be controlled by a time clock to prevent day time operation.
 24. Luminaires linked by blue spine lines indicate DALI dimming on main control system. Luminaires linked by green spine lines indicate non-dim on local manual controls.

STAGE 5
Printed
18.11.2025

Rev	Date	Notes
11	18/11/2025	Stage 5
10	23/10/2025	Stage 5
9	30/09/2025	Stage 5
8	31/07/2025	Stage 5
7	02/07/2025	Stage 5
6	01/05/2025	Stage 5a Issue
5	24/04/2025	Stage 5a WIP Issue
4	17/04/2025	Stage 5a WIP Issue
3	10/12/2023	Stage 4 Issue
A	26/05/2023	Stage 4 Issue
1	14/02/2023	Stage 3 Issue

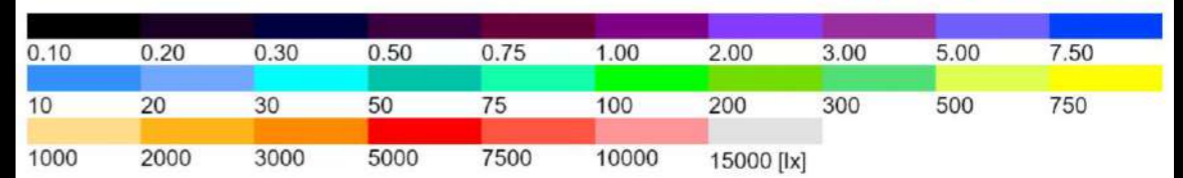
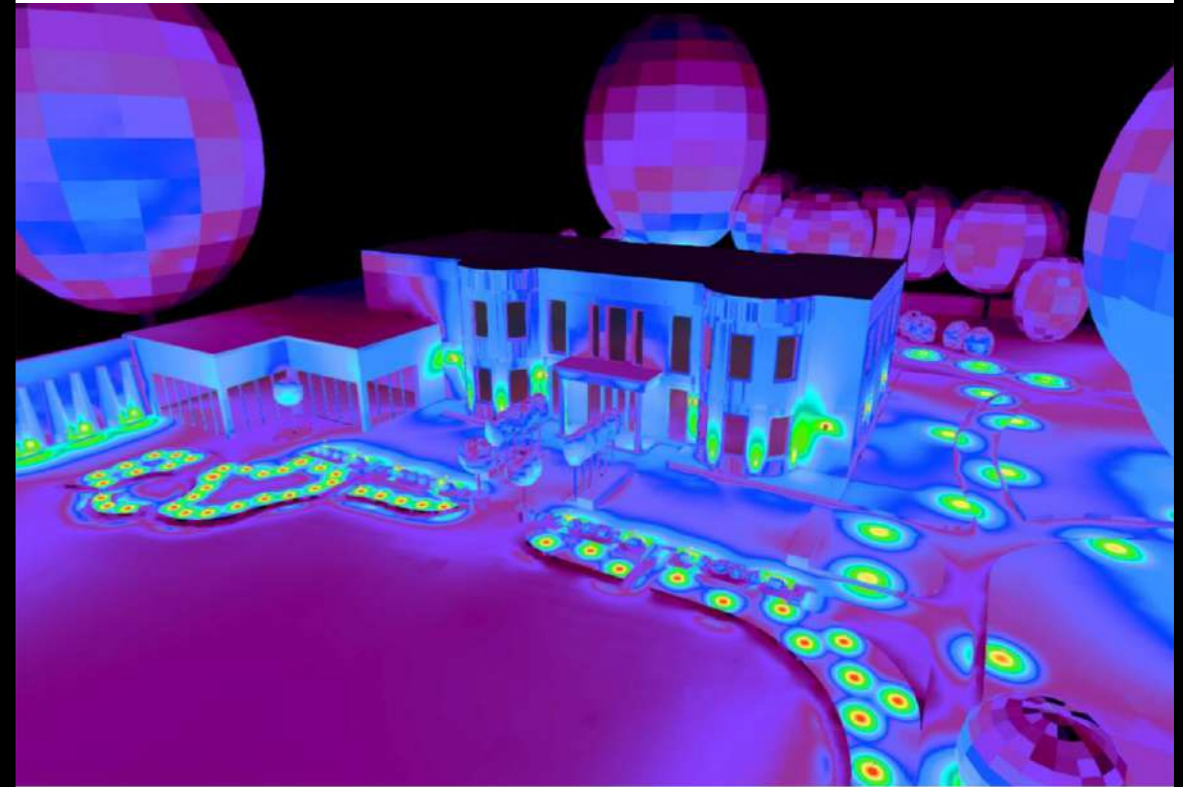
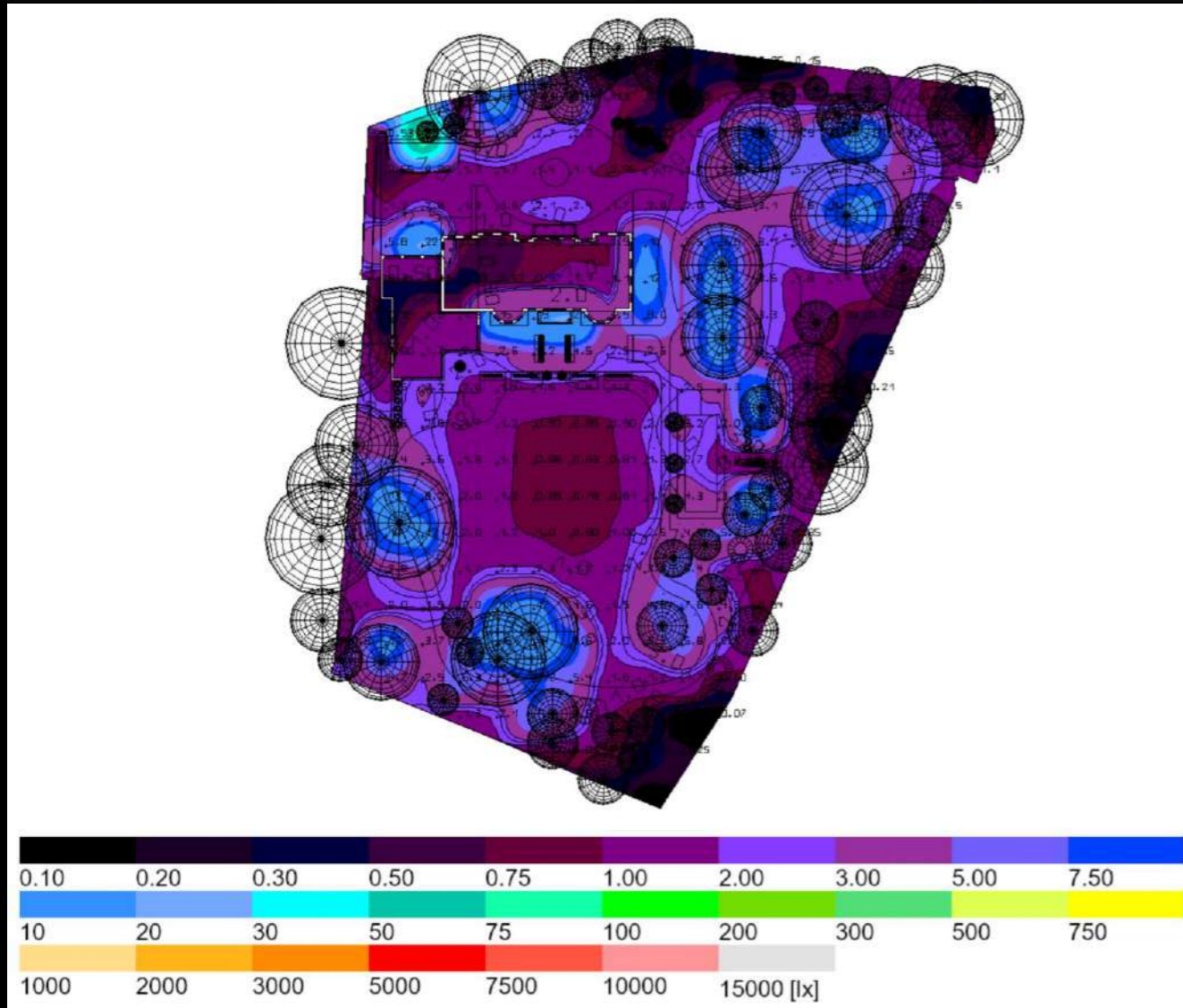
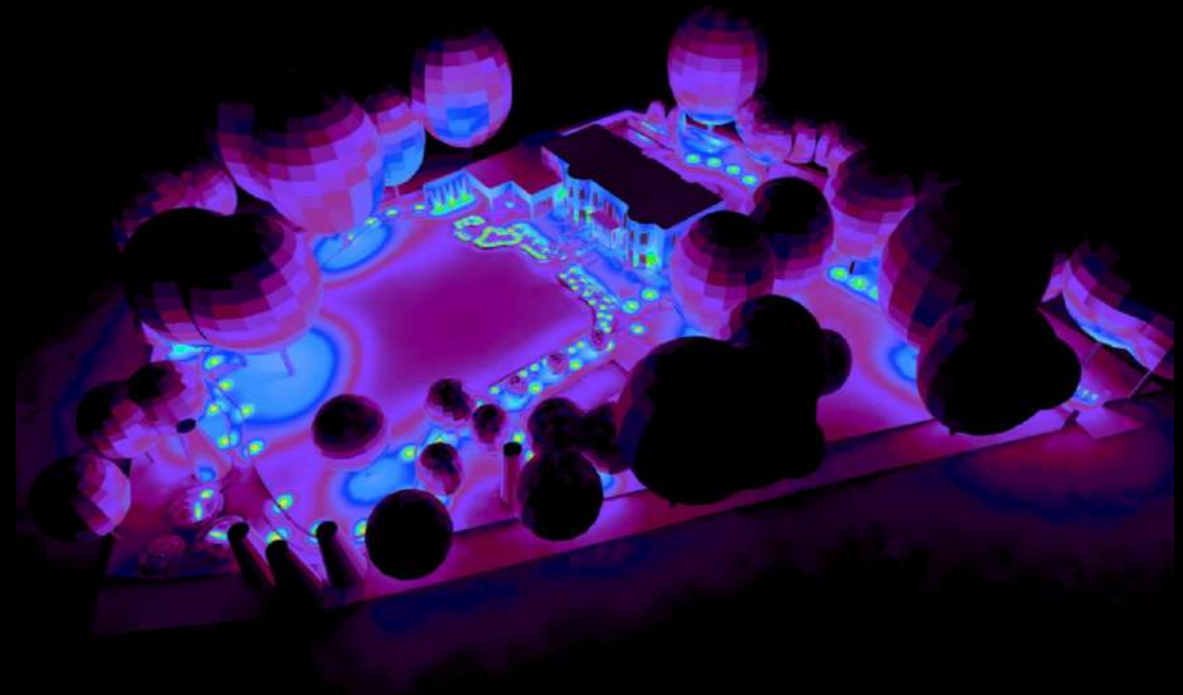
XAVIODESIGN
MAYFAIR

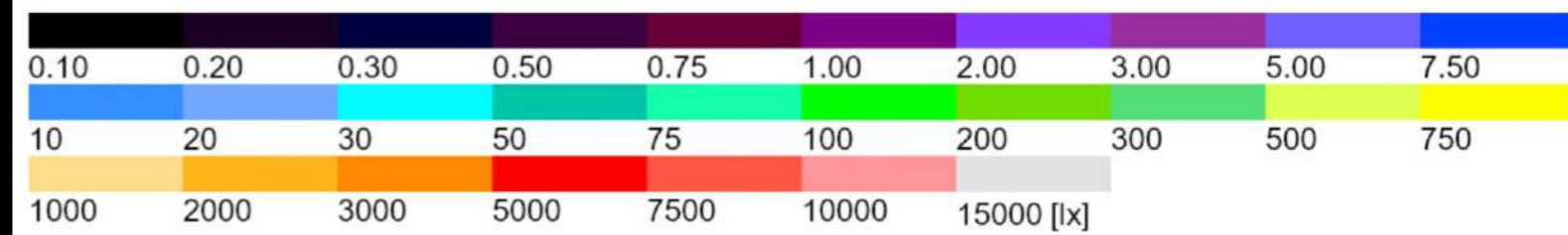
XAVI DESIGN OF MAYFAIR
100 Brook Street, London W1A 1AA
020 7330 0271 | xavo@xaviodesign.com | www.xaviodesign.com

Project	Private Client		
Client	Private Client		
Project Ref			
Issued For			
For	Floorplan		
Project Stage	Revision	BBA Stage	
For Construction	11	5	
Drawn by	Approved by	Date	
PC	SP	18.11.2025	
Scale	Unit	MM	
1:50	A1	MM	

30 ■ CAD car showroom interior lighting plan

Light Control Panel
Driver Location











35 ▪ Ellicott Park palace grand entrance CGI - SketchUp + V-Ray

















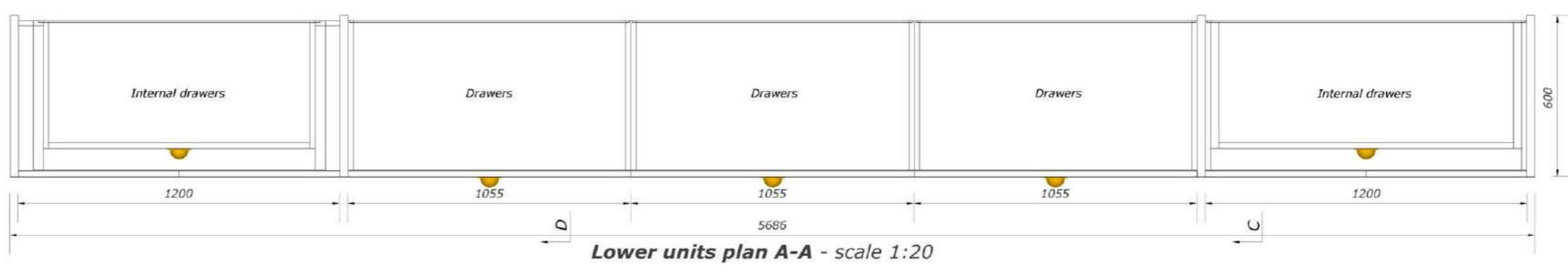
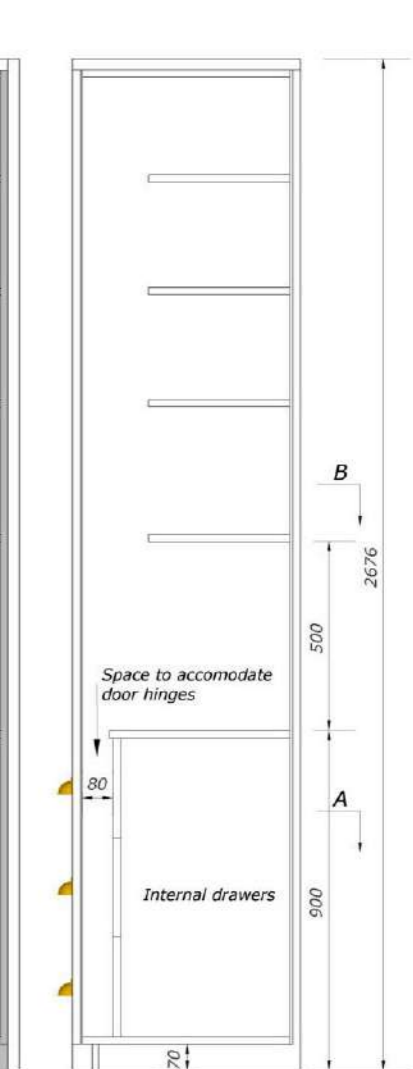
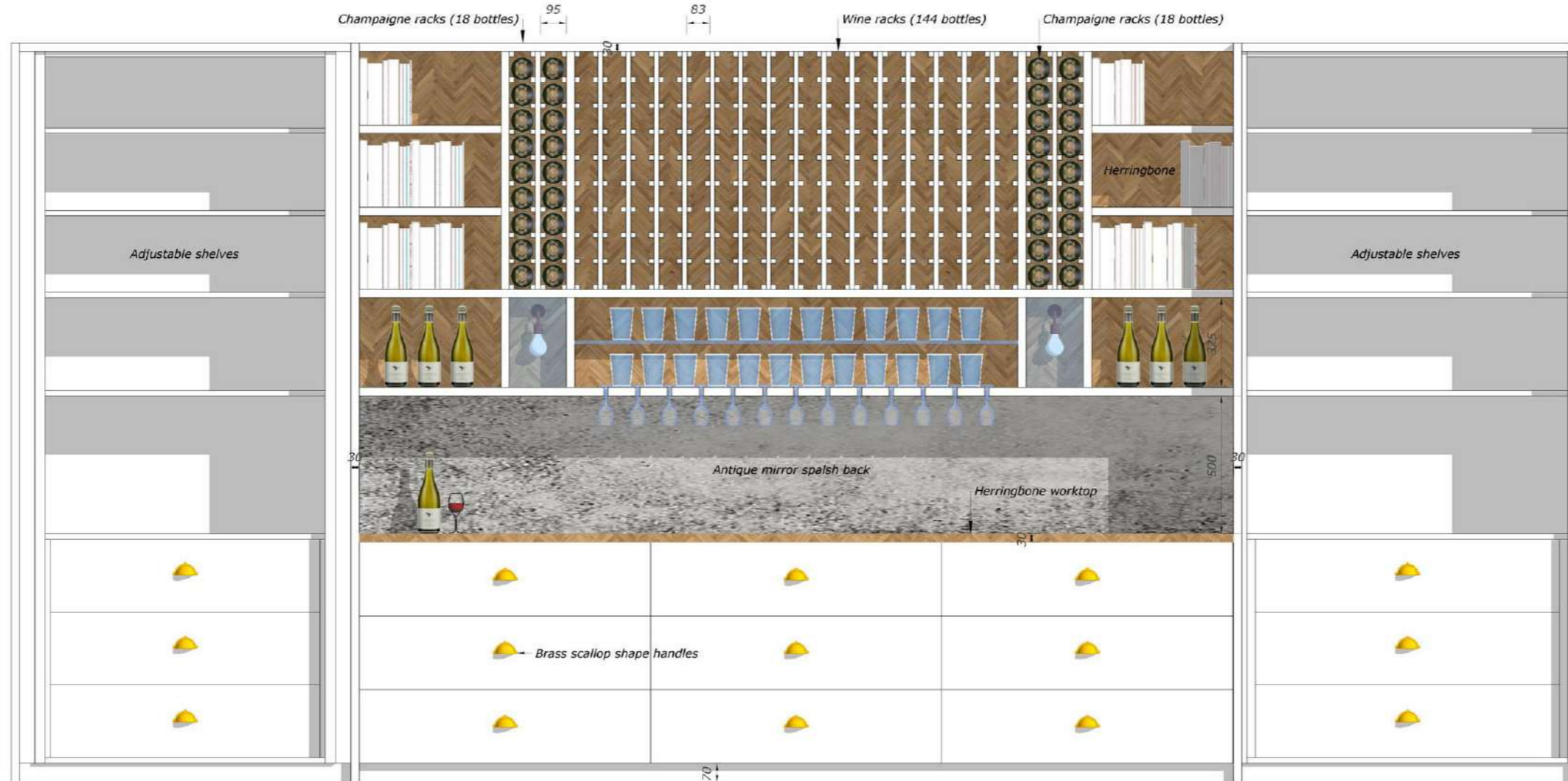
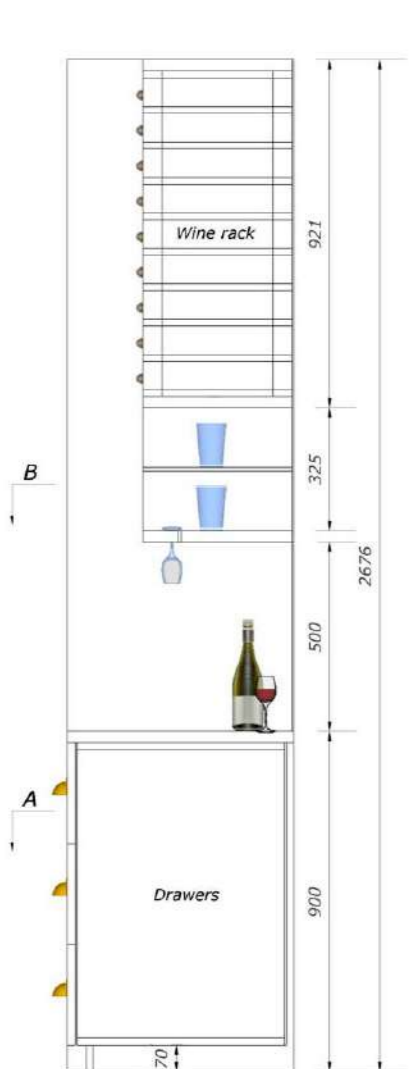
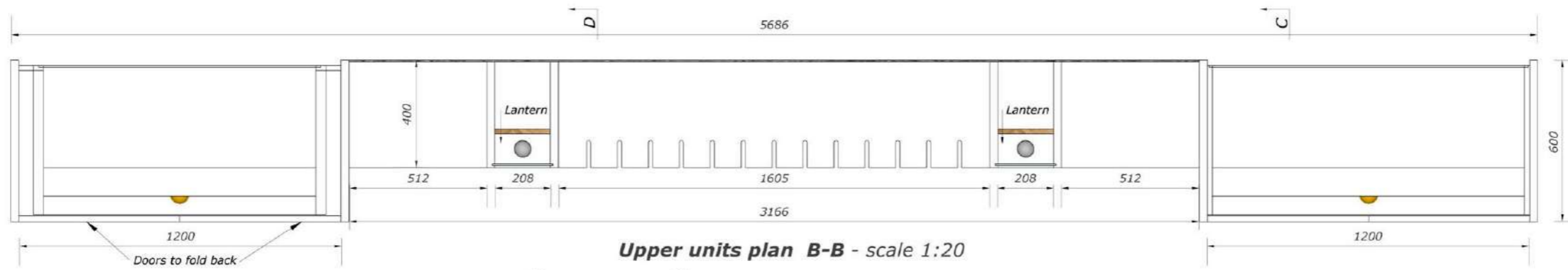


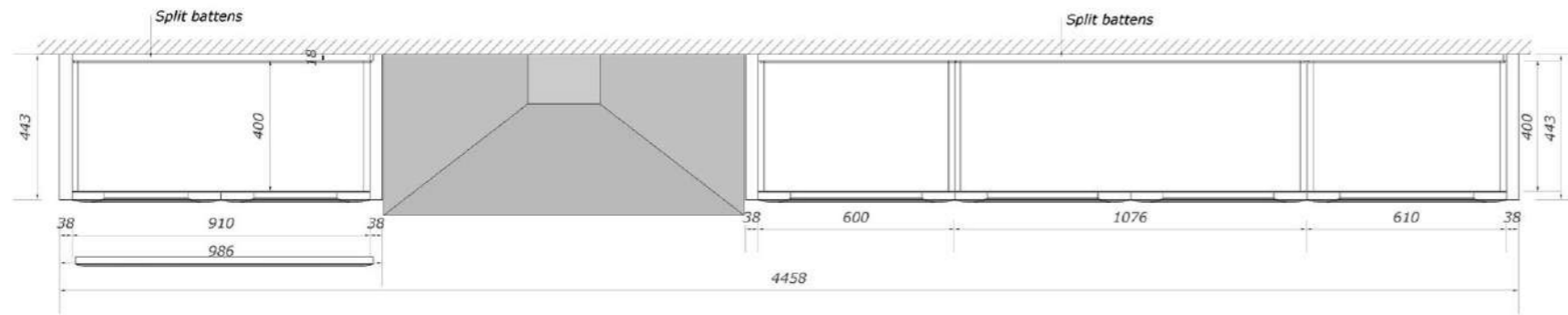


45 ▪ Small contemporary villa exterior CGI 3 - SketchUp + V-Ray

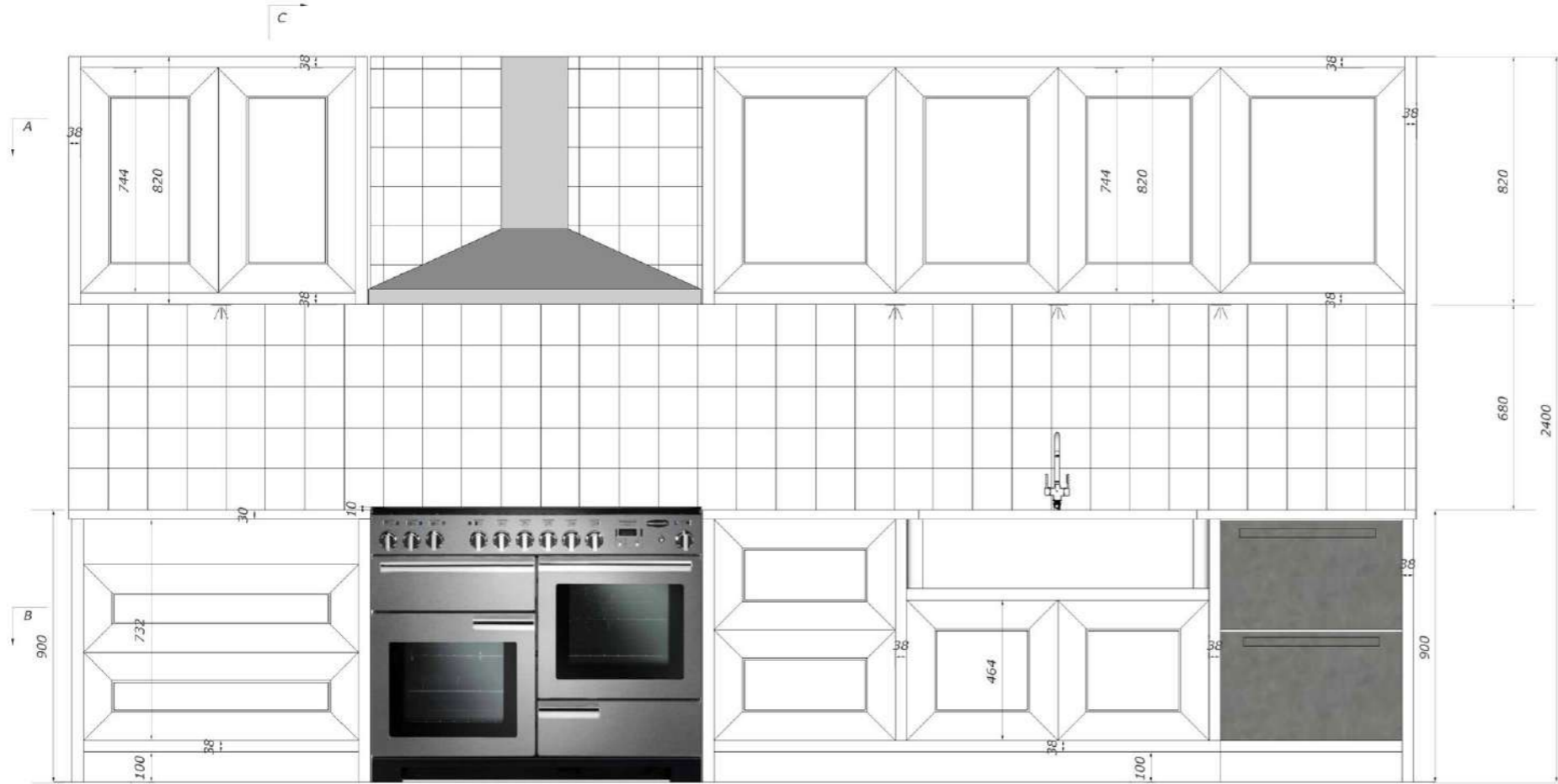


46 ■ Contemporary villa exterior CGI 2 - SketchUp + V-Ray

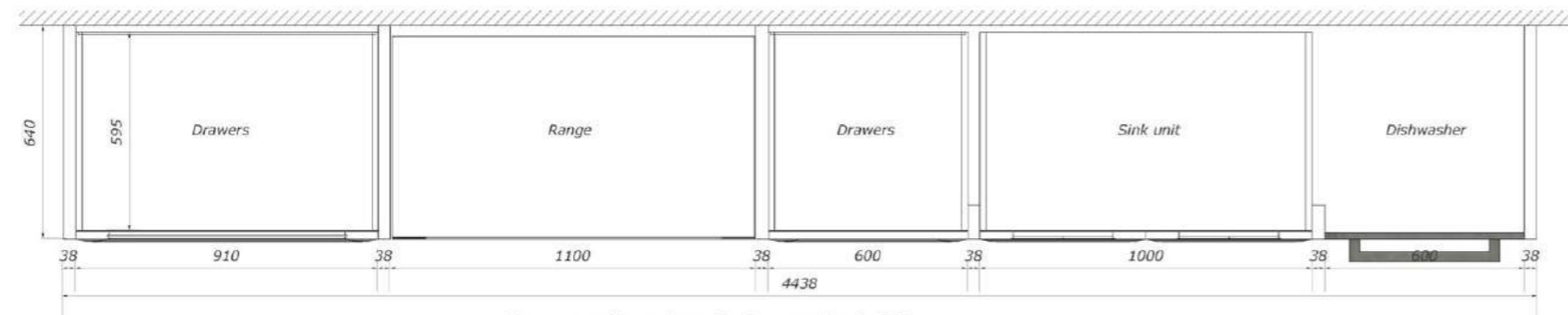




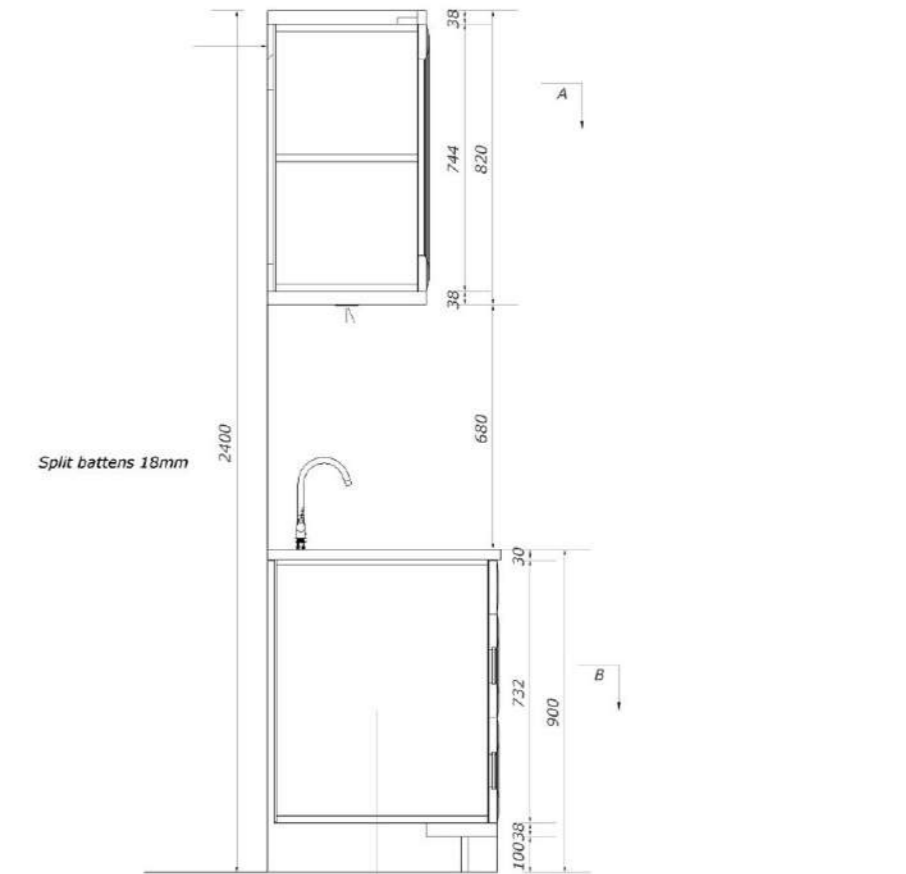
Wall-hung units plan A-A - scale 1:20



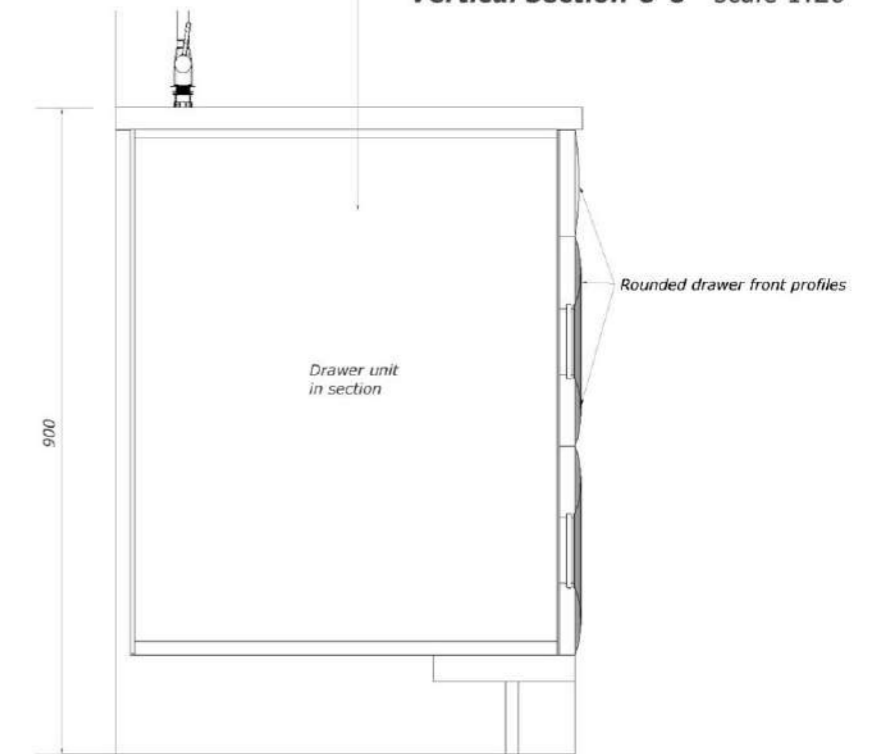
Wall run joinery elevation - scale 1:20



Base units plan B-B - scale 1:20



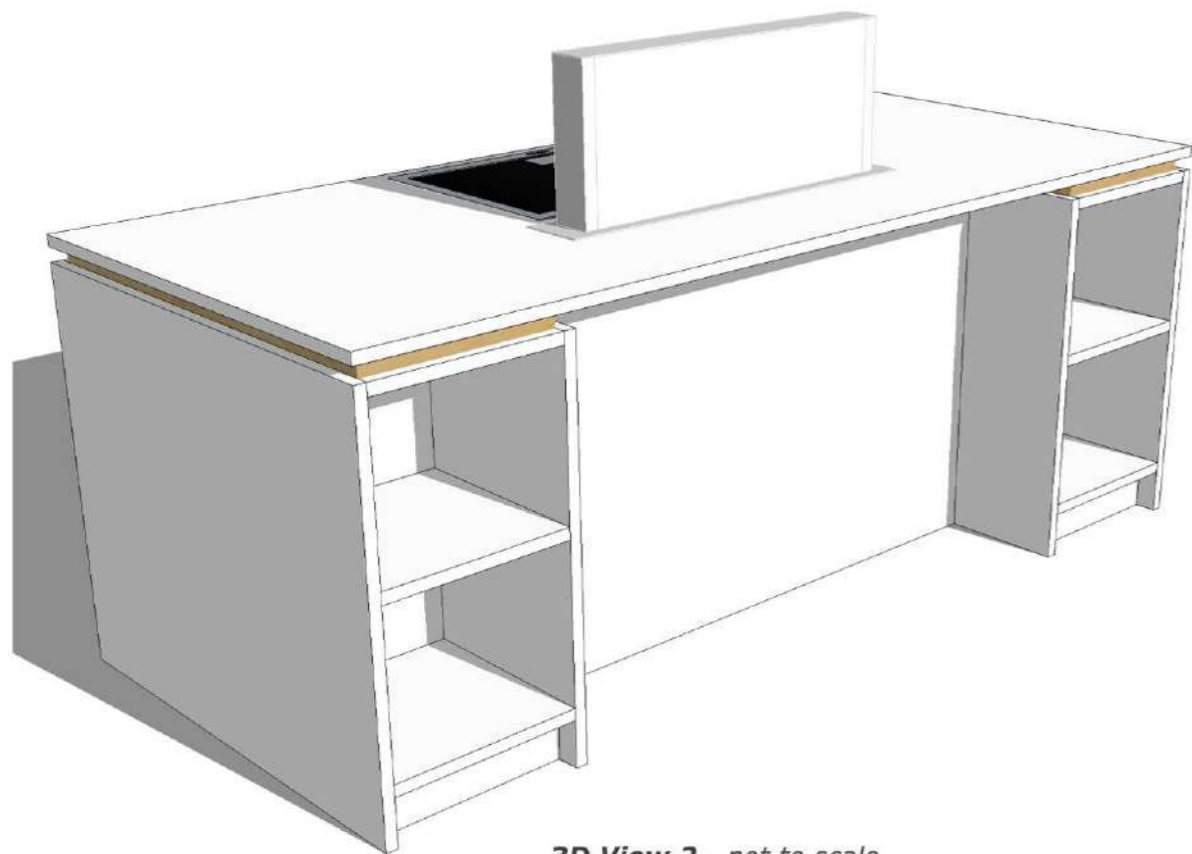
Vertical section C-C - scale 1:20



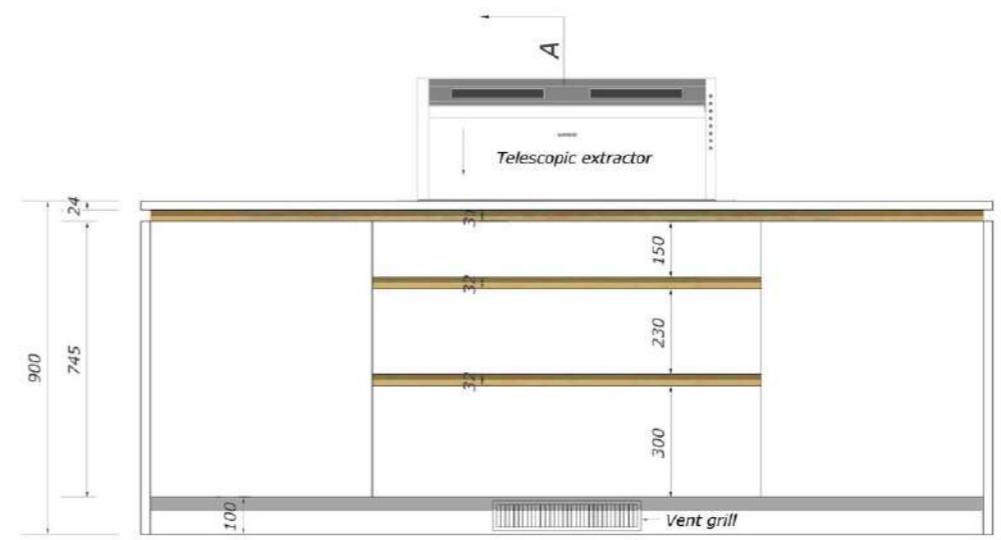
Detailed section C-C - scale 1:10



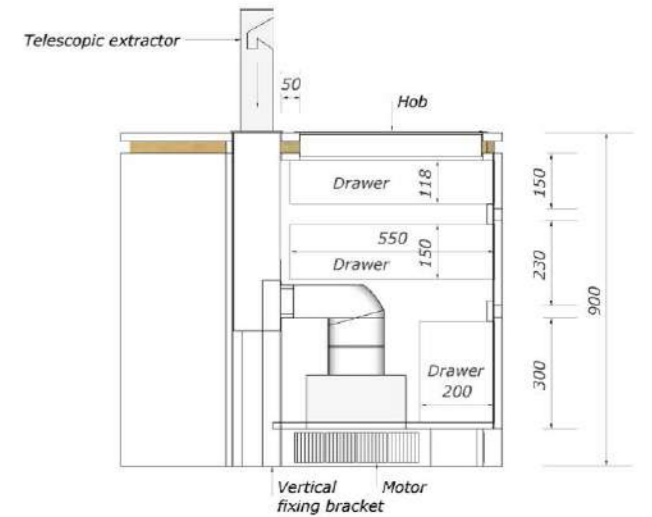
3D View 1 - not to scale



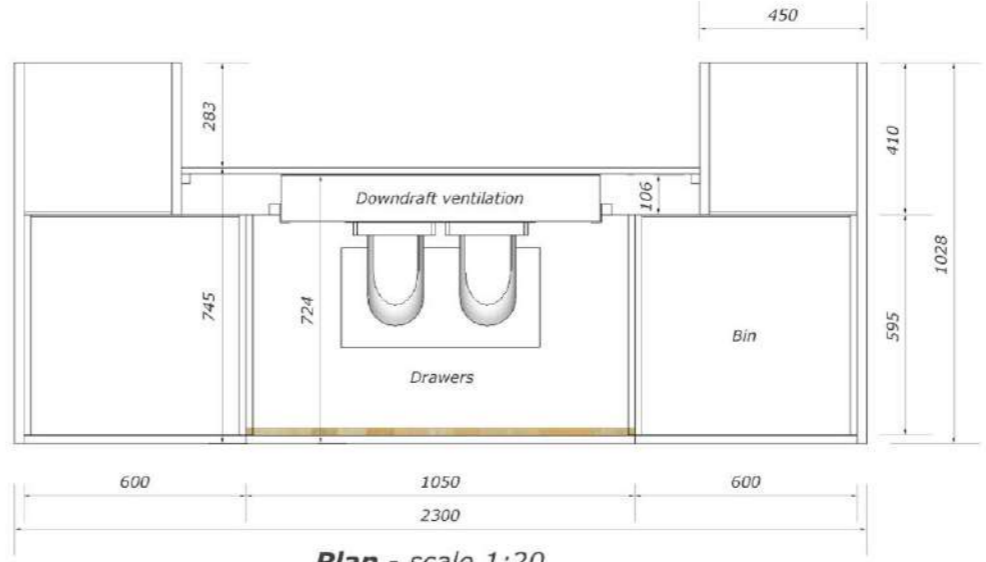
3D View 2 - not to scale



Hob side elevation - scale 1:20



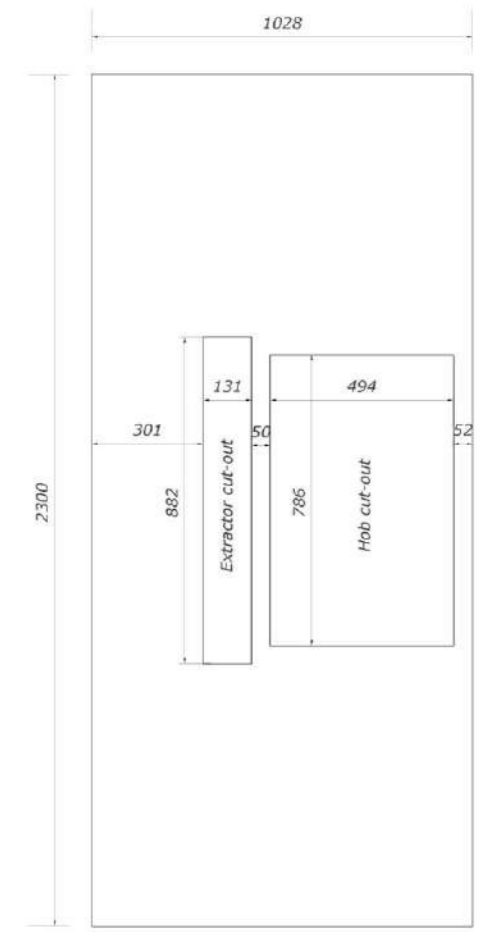
Section A-A - scale 1:20



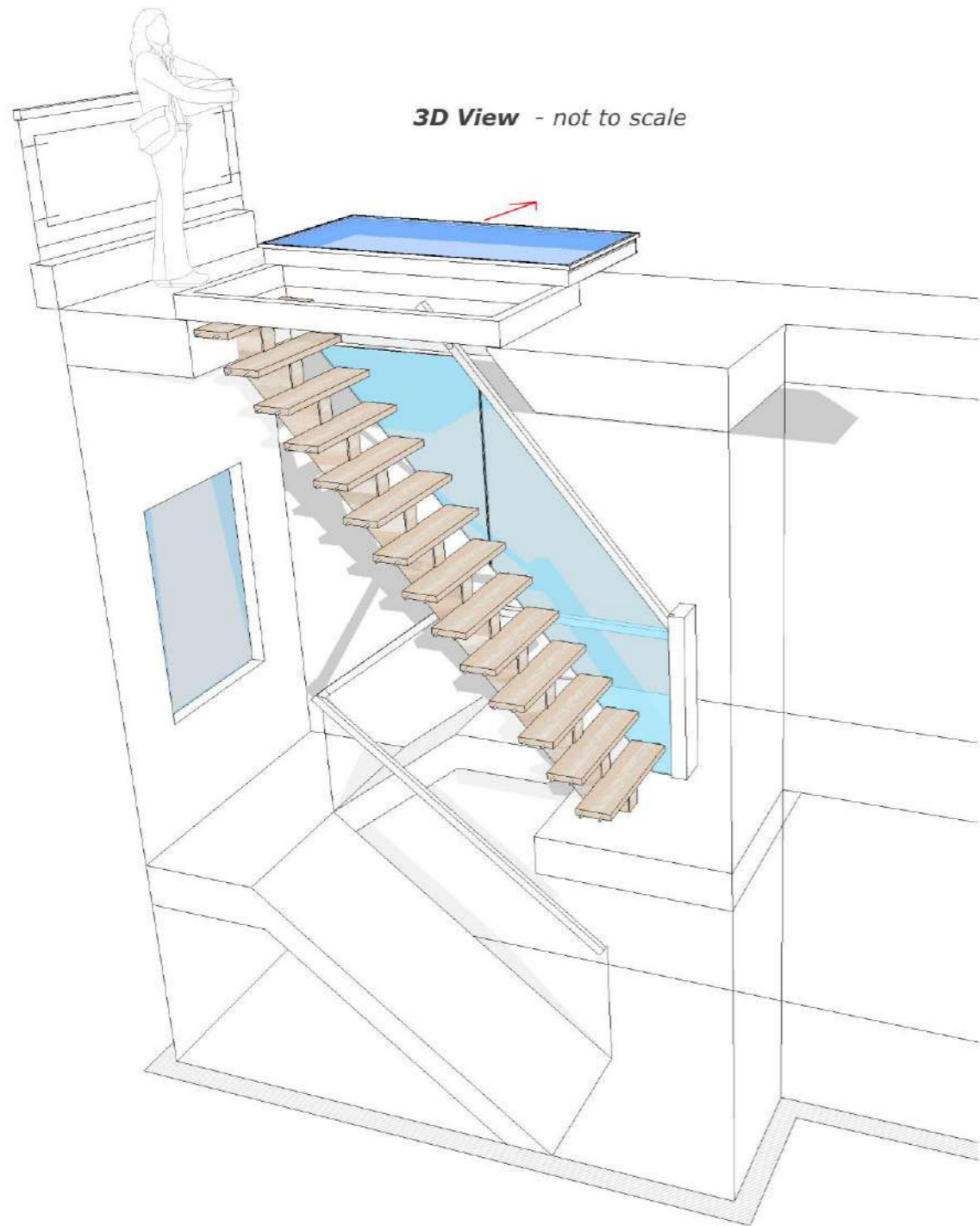
Plan - scale 1:20



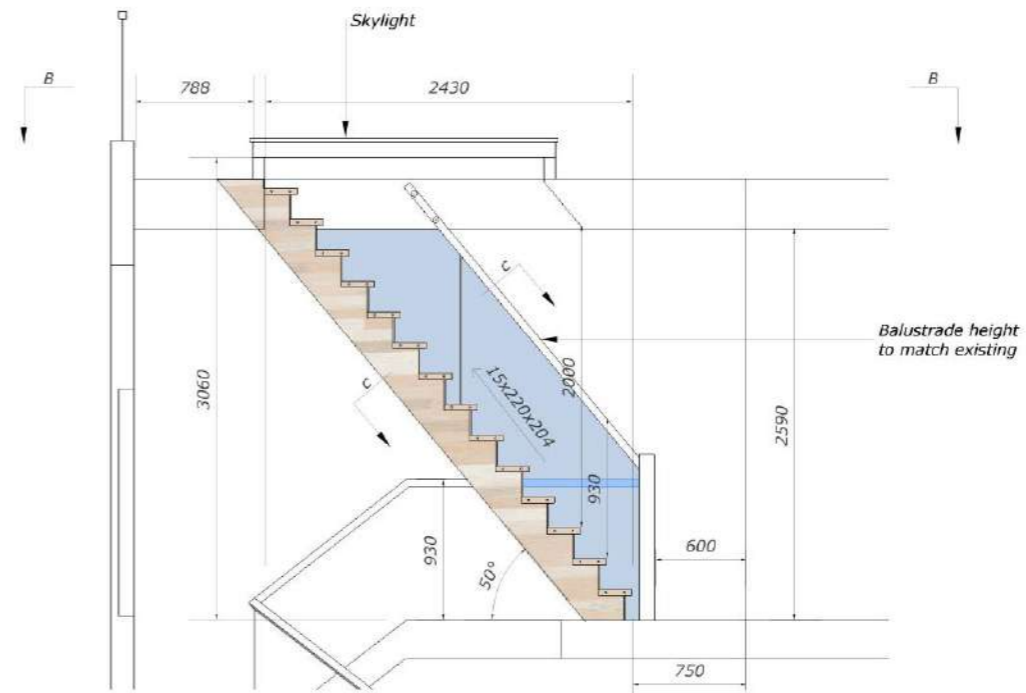
Seating side elevation - scale 1:20



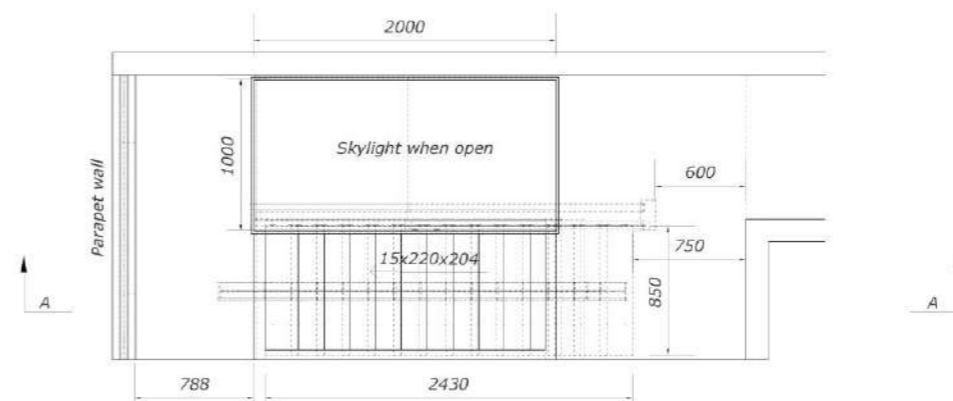
Worktop plan with cut-outs - scale 1:20
(Surface mounted option)



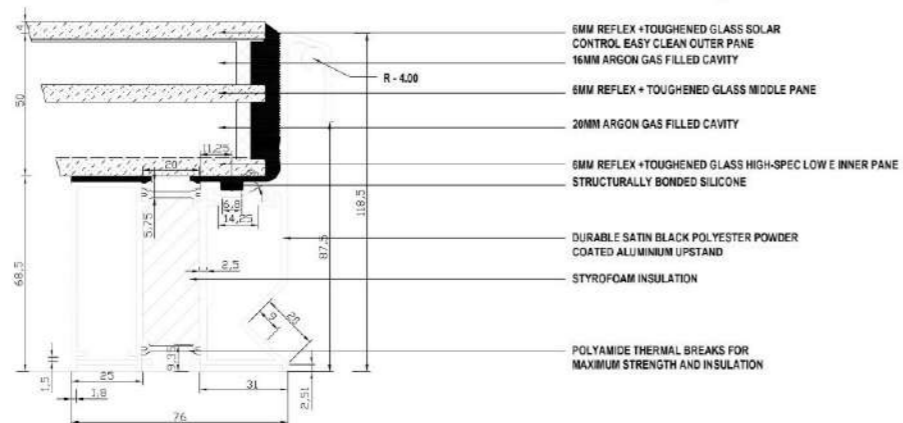
3D View - not to scale



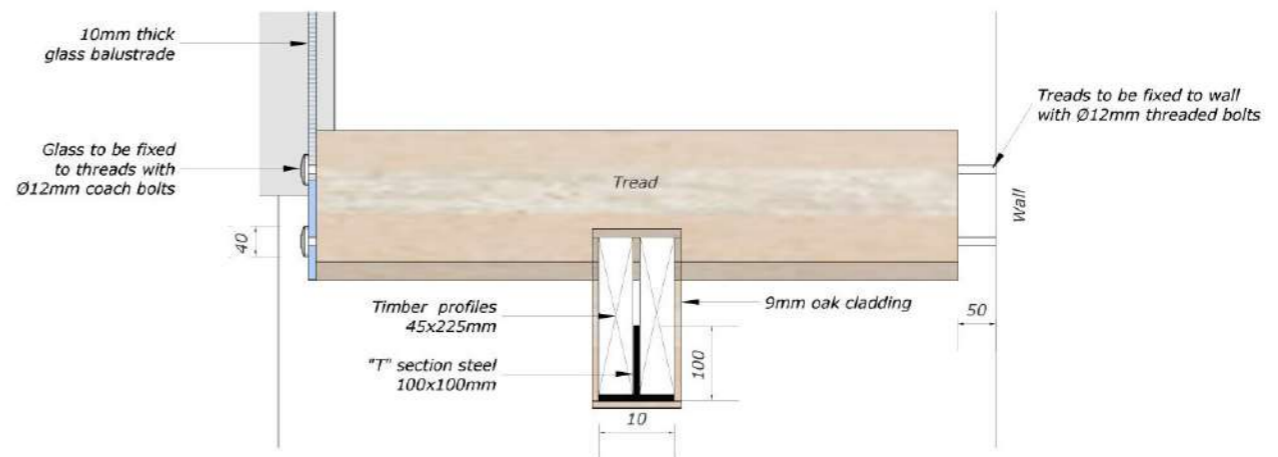
Longitudinal Section A-A - scale 1:50



Plan B-B - scale 1:50



Proposed skylight detailed section - not to scale



Detailed Section C-C - scale 1:10

Overall height = 3060mm
 Number of steps = 15
 Tread width = 220mm
 Rise = 204mm
 Flight angle = 50.19°